

GENERAL SPECIFICATIONS

MANUFACTURERS QUALIFICATIONS

We maintain at all times a quality control as herein outline so as to insure that all precast meet all requirements as specified under physical requirements. All precast are manufactured by skilled workmen who have at least five years experience in similar work and supervised by foremen certified by the ACI (American Concrete Institute).

MANUFACTURING

All precast work is true to dimensions and have clean, accurate arises and details faithfully executed. Reinforcing steel conforms to ASTM 615 for rebar, and deformations are conformed to ASTM-M-0305. All precast have a minimum compressive strength of 5,000 psi at 28 days of age when tested by means of 6 x 12 cylinder molds from the materials. There are a maximum of 4-6% air entrainment for all precast according to ASTM standards.

REINFORCEMENT

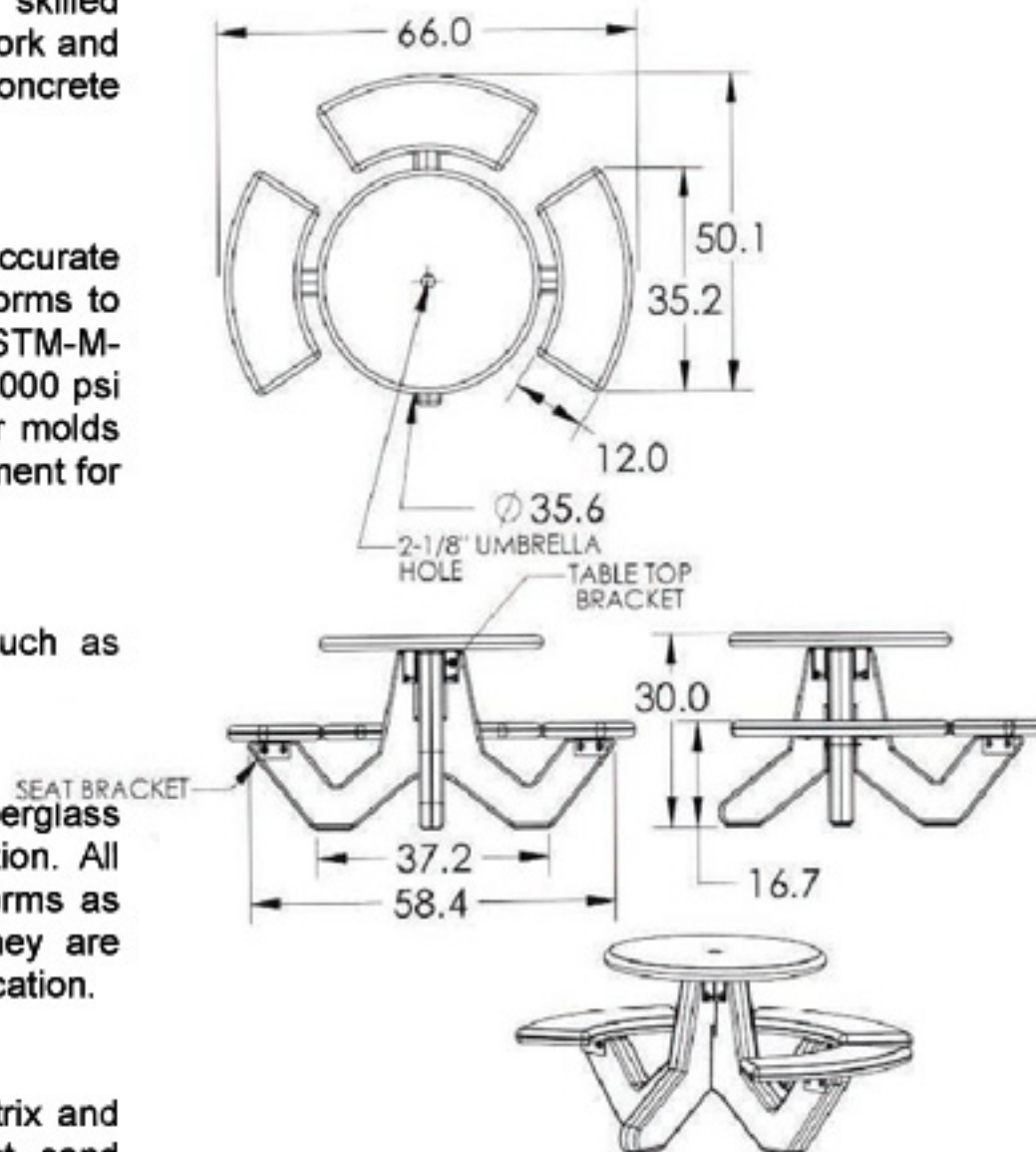
All concrete products have reinforcement characteristics such as rebar or fiberglass.

MOLDS

The forms for the precast unit are constructed of metal or fiberglass and designed to withstand casting pressures without distortion. All anchors, inserts, bolts etc are placed and secured in the forms as required for the attachment and handling of the units. They are clamped or secured so as to hold them in position during fabrication.

PHYSICAL CHARACTERISTICS

All exposed surfaces are treated to remove the surface matrix and expose the aggregate produced by chemical retardant-not sand blasting. All precast have water-repellent sealer treatment applied in strict accordance with manufacturer's specifications and tolerance is within 1/8" of specified dimensions, designed for structural analysis and calculation.



COLOR

Color is uniformed throughout as approved by owner or specifier in accordance with manufacturer's recommendation.

MATERIALS

Portland cement. ASTM C 150 Type I or III

All aggregate to meet ASTM C33 specifications.

REQUIRED MATERIALS FOR APPROVAL

A. Shop drawings with dimensions general construction component parts, anchoring details and installation instructions.

B. Samples upon request of architect.

C. Complete data on manufacturer's specifications and technical information.

WARRANTY

We provide a two-year limited warranty on all our precast concrete products.

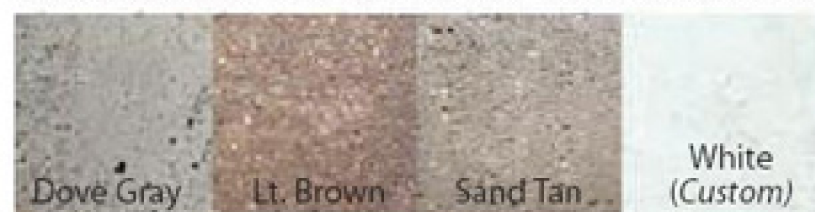
Plastic, metal and wood products are warranted for one year from date of purchase.

Finish Options

Smooth Finishes (For Precast Concrete or GFRC)



Lt. Sand Blasted (For Precast Concrete or GFRC)



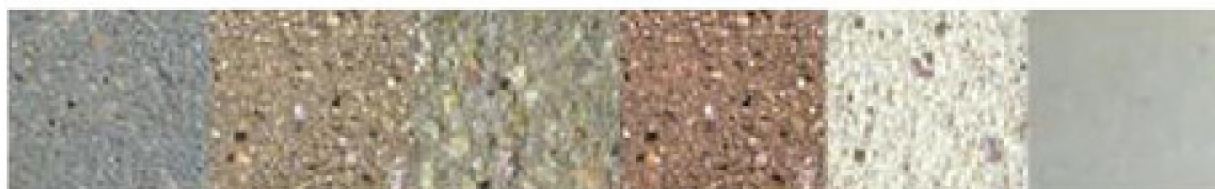
Exposed Aggregate for Precast Concrete

Dura Brite



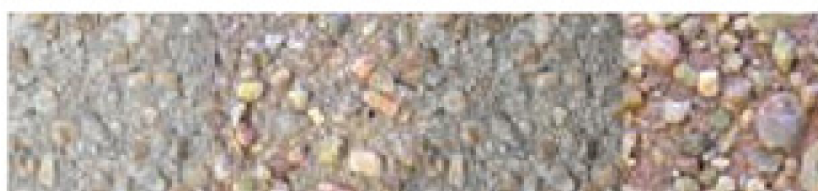
Lt. Brown Charcoal Sand Tan Dove Gray Terra Cotta

Etched



Dove Gray Lt. Brown Sand Tan Terra Cotta White (Custom) Slate Stone (Custom)

Perma



Plain Sand Tan Dove Gray Lt. Brown