

GENERAL SPECIFICATIONS:

MANUFACTURER'S QUALIFICATIONS

Highland Products Group maintains at all times a quality control program as herein outlines so as to insure that all precast meets all requirements as specified under physical requirements. All precast shall be manufactured by skilled workmen who have at least five years experience in similar work and supervised by foreman certified by the ACI (American Concrete Institute).

MANUFACTURING

All precast work shall be true to dimension and have clean, accurate arises and details faithfully executed. Reinforcing steel shall conform to work and shall have a minimum compressive strength of 5,000 psi at 28 days of age when tested by means of cylinder molds (6x12) from the materials. There shall be a maximum of 4-6% air entertainment for all precast according to ASTM standards.

REINFORCEMENT

All concrete products have reinforcement characteristics such as rebar or fiberglass.

MOLDS

The forms for the precast units shall be constructed of metal or fiberglass laminated designed to withstand casting pressures without distortion. All anchors, inserts, bolts, ect. will be placed and secured in the forms as required for the attachment and handling of the units. These shall be clamped so as to hold them in position during fabrication.

PHYSICAL CHARACTERISTICS

All exposed surfaces are treated to remove the surface matrix and exposed the aggregate produced by chemical retardant - not sand blasting. All precast shall have the water-repellent sealer treatment applied in strict accordance with manufacturer's specifications. All tolerances shall be within 1/8" of specified dimensions, designed for structural analysis and calculation.

COLOR

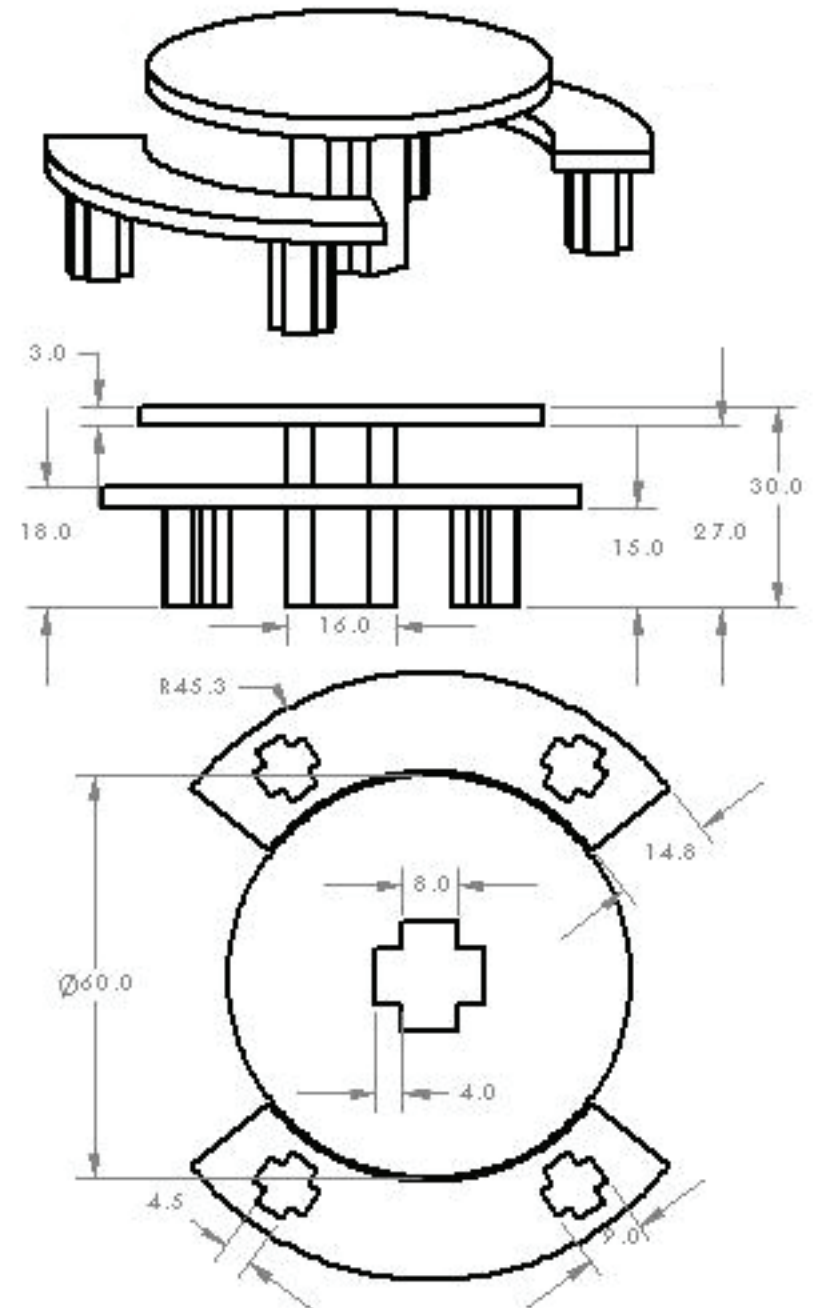
Color to be uniform throughout as approved by owner or specifier in accordance with manufacturer's recommendation.

MATERIALS

Portland Cement: ASTM C150 Type 1 or 3
All aggregate to meet ASTM C33 Specifications

REQUIRED MATERIALS FOR APPROVAL

- Shop drawings with dimensions, general contraction component parts, anchoring details and installation.
- Samples upon request of architects.
- Complete dates on manufacturer's and technical information.



ITEM: 154-1184

WEIGHT: 1,792 LBS



INSTALLATION INSTRUCTIONS

154-1184 Round Concrete “Courtyard” Picnic Table

***This table and bench set is NOT a free-standing set. The benches and table must be anchored to a firm, level, concrete pad or sidewalk before use.

***The table and benches may be stood up and set in place for determination of placement of anchor inserts only.

BENCHES

The benches are pre-cast with four 3/8” inserts on the lower end of each leg. These inserts are used to secure a 3” x 2” angle bracket to the leg for anchoring. The 2” side of the angle bracket is used for bolting and securing the bench to the concrete pad or sidewalk. All necessary angles and bolts are included.

The purchaser of this table-bench set is responsible for drilling and securing anchors into the concrete pad or sidewalk, and to make certain that the table and benches are level, and sufficiently secure for everyday use.

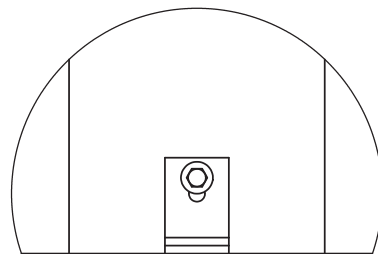
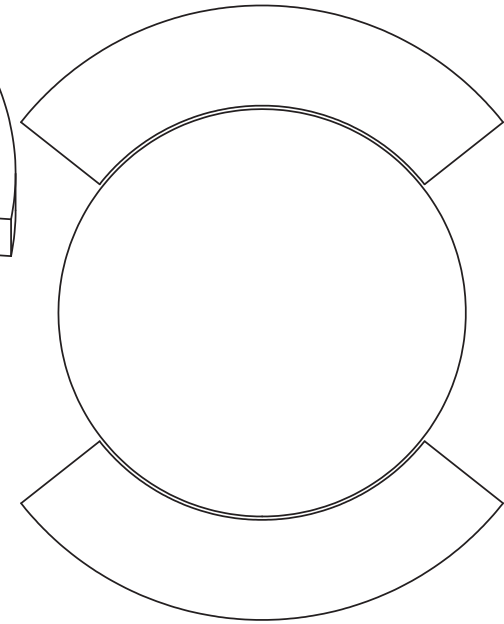
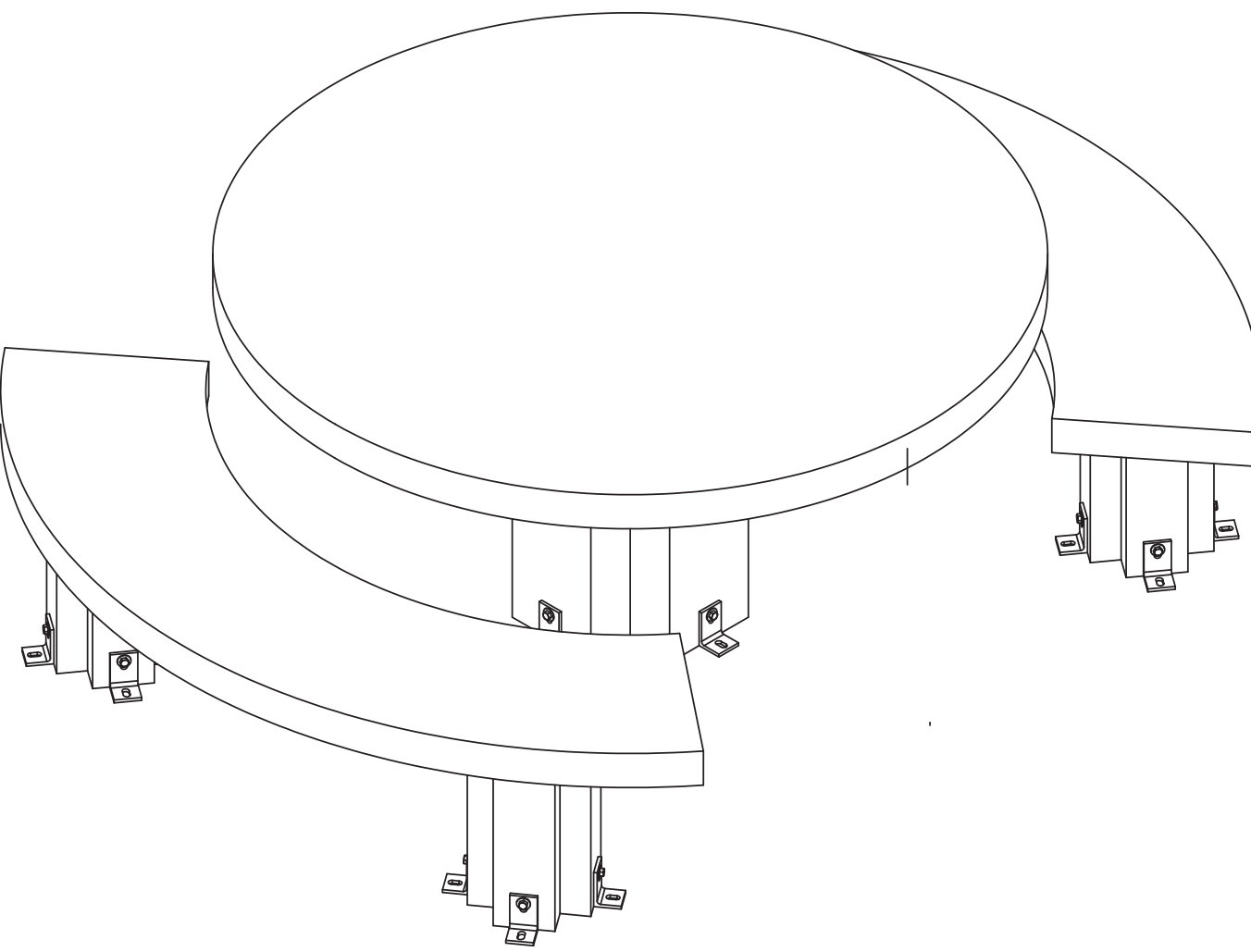
The inserts used for the concrete pad or sidewalk are 3/8”, and can be purchased from us or from a local hardware store.

Care should be taken to drill the holes in the sidewalk or pad to match up with the holes in the angle bracket, and to sufficiently epoxy or anchor the inserts into the pad or sidewalk.

TABLES

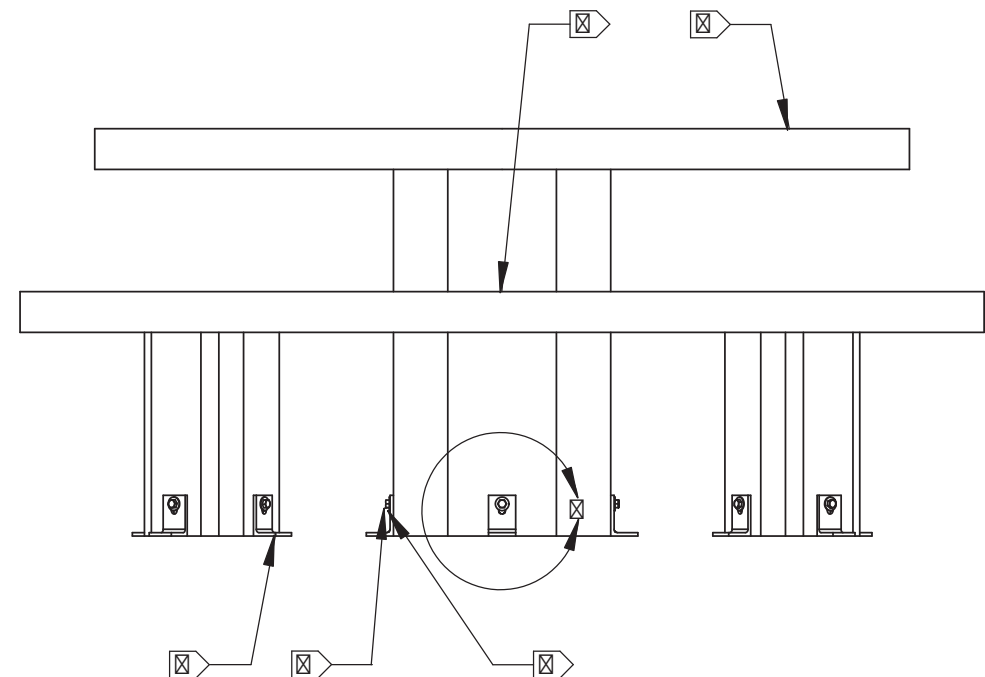
The tables are pre-cast with four 3/8” inserts on the lower end of each leg. The tables are anchored in the same way that the above legs are installed.

Should you have any questions, please contact us.



DETAIL A
SCALE 1 : 6

3350 NW BOCA RATON BLVD., SUITE B2 • BOCA RATON, FL • 33431
PHONE: 561.620.7878 • FAX: 561.620.8668



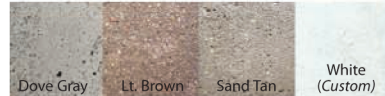


Finish Options

Smooth Finishes (For Precast Concrete or GFRC)



Lt. Sand Blasted (For Precast Concrete or GFRC)



Exposed Aggregate for Precast Concrete

Dura Brite



Etched



Perma

