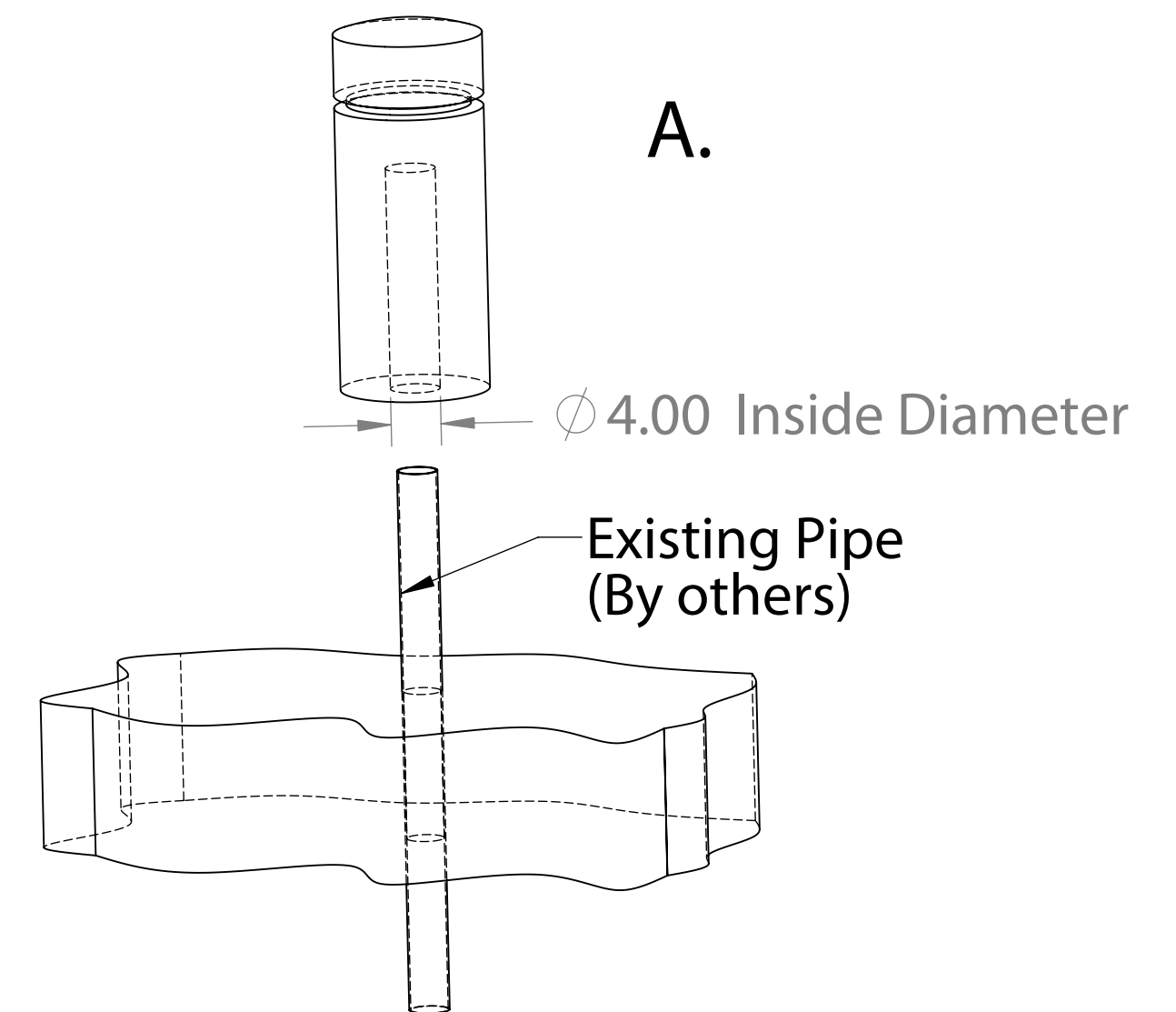


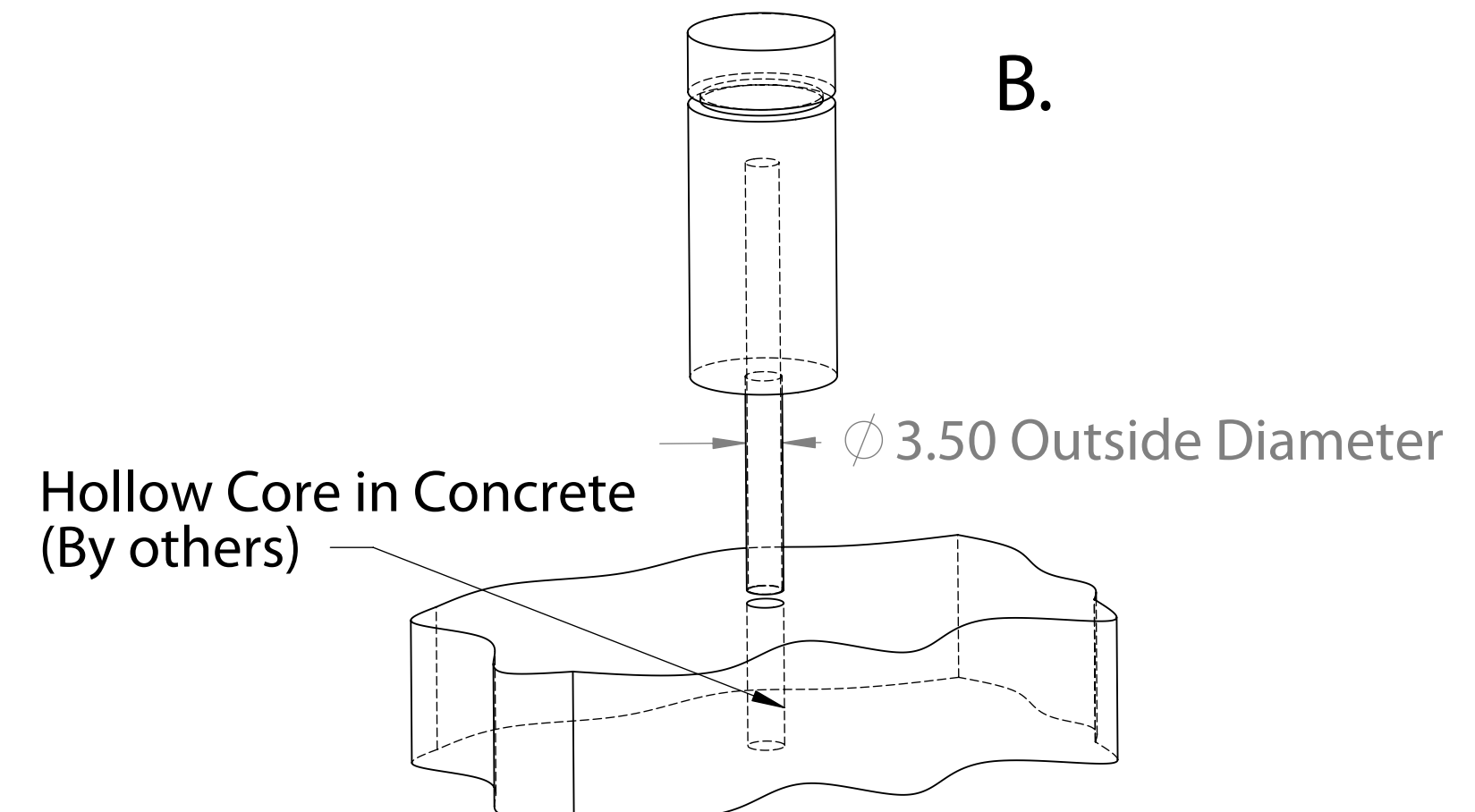


Bollard Anchoring Options

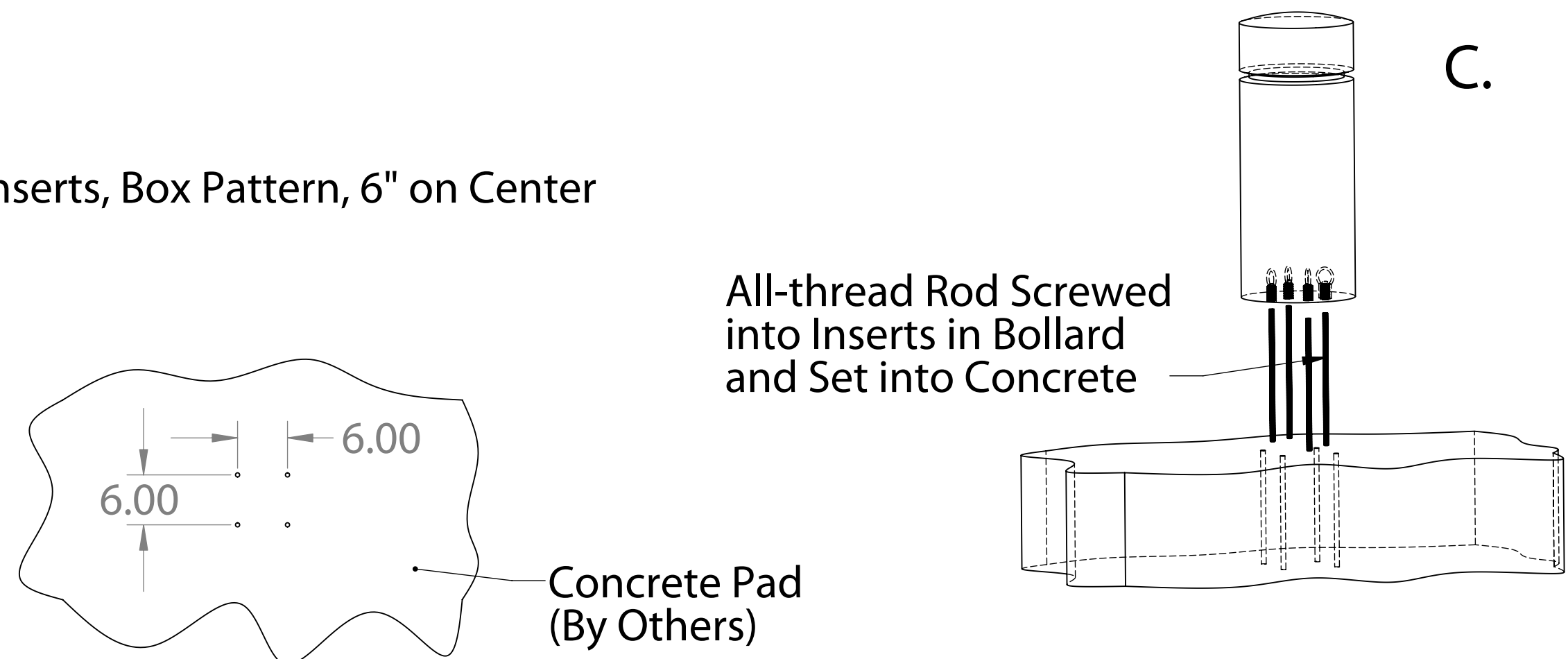
Type A - Hollow Core: 4" PVC x Minimum 18" Height



Type B - Protruding Pipe: 3" Galvanized Pipe Protruding 18"



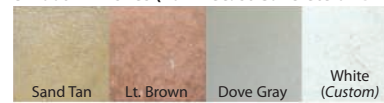
Type C - Threaded Inserts: (4) 1/2" Inserts, Box Pattern, 6" on Center





Finish Options

Smooth Finishes (For Precast Concrete or GFRC)

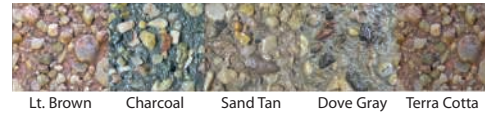


Lt. Sand Blasted (For Precast Concrete or GFRC)



Exposed Aggregate for Precast Concrete

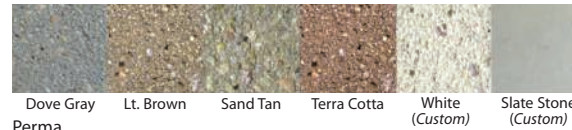
Dura Brite



Thermoplastic Colors



Etched



Perma

