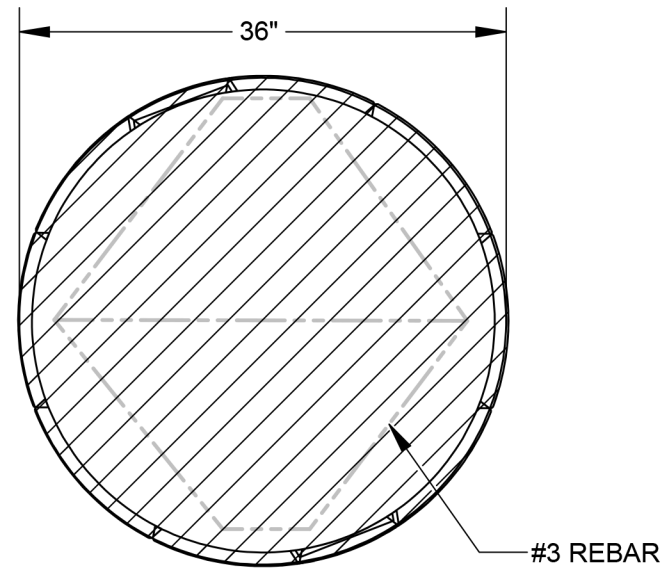
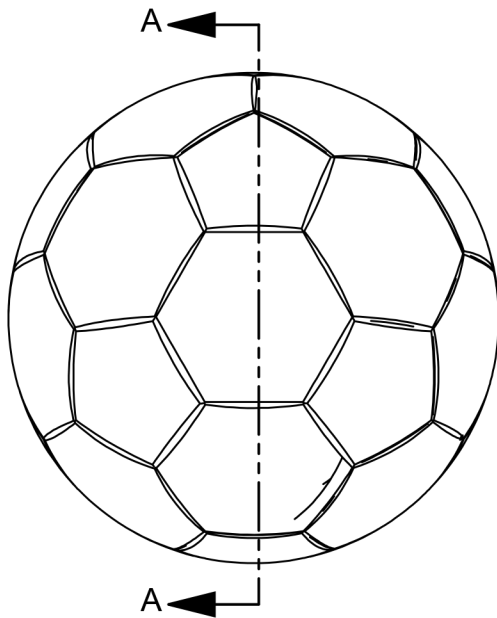
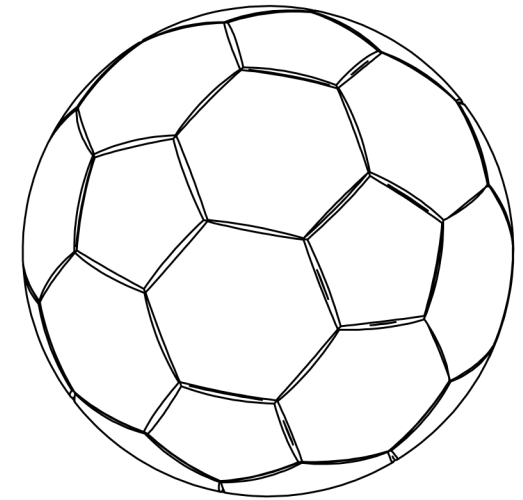


thepark

AND FACILITIES
C A T A L O G

WEIGHT: 2000 LBS
MATERIAL: CONCRETE

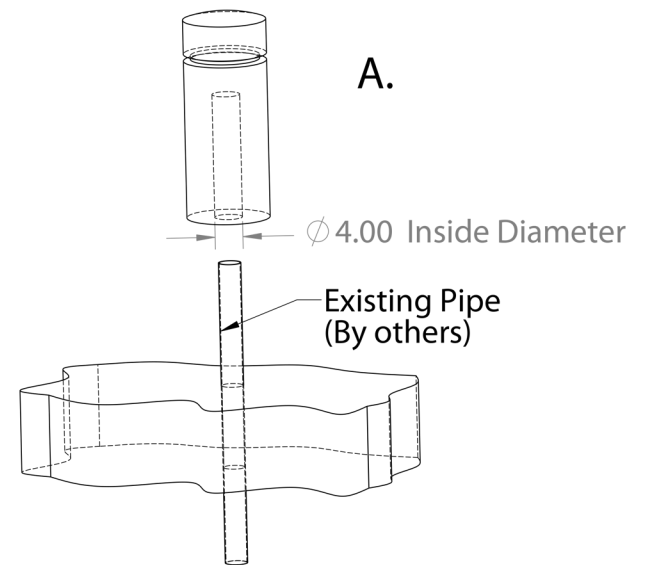


SECTION A-A

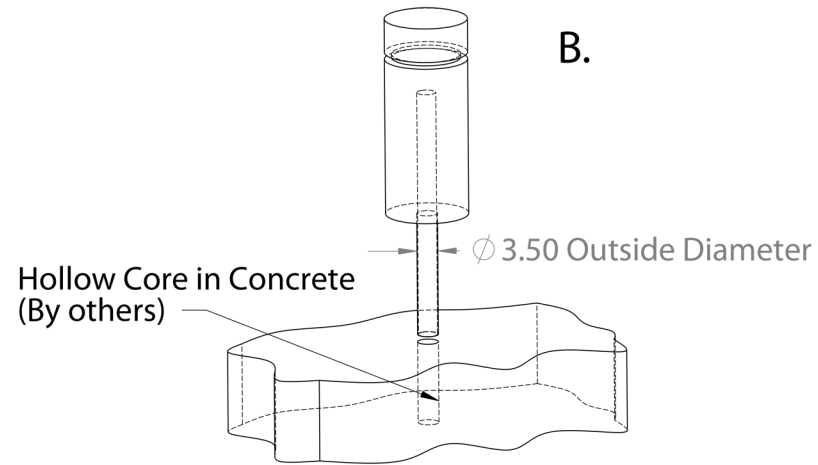
36Dia Soccer Ball Concrete Bollard

Item #: 154-1600

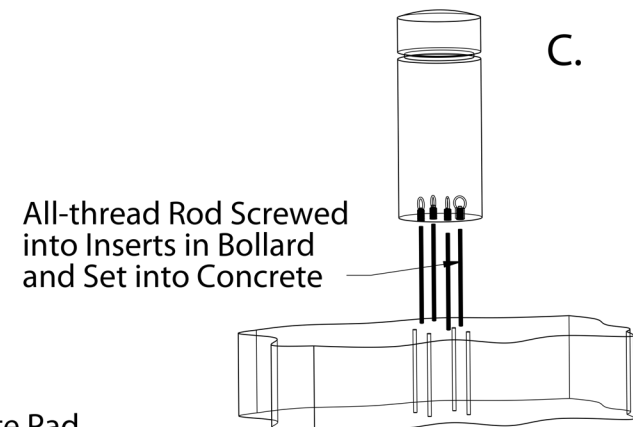
Type A - Hollow Core: 4" PVC x Minimum 18" Height



Type B - Protruding Pipe: 3" Galvanized Pipe Protruding 18"



Type C - Threaded Inserts: (4) 1/2" Inserts, Box Pattern, 6" on Center



Bollard Anchoring Options

