



6-Ft. Contemporary Recycled Plastic Bench with Back

ITEM NO – 251-1005

1. Unpack and lay out pieces to assemble. Verify that the parts, quantity, and dimensions match those on the enclosed bill of material.
2. Begin by loosely assembling the bench end castings to the .back. support tube. See diagram 1.
3. Lay one end casting .back. side down and attach the .back. support tube. Place the support tube into the .back. receiving hole of the casting and fasten with a 1/2 x 1 1/2 cap screw through a plastic spacer, through the casting, and into the threaded end of the support tube. See diagram 1. Hand snug the cap screw . do not tighten.
4. Lay the second end casting .back. side down and attach the back. support tube following the same procedure as step 3.
5. Place the center support casting(s) at the proper location(s) on the .back. support tube. Rest support against the tubing. Reference from inside edge of one end casting to inside edge of support casting.
6. 6 foot bench center supports at 21 inches to edge of first support and 45 inches to edge of second support.
7. Place a bull nose board (best side facing you) nose down, into the lower pocket of one end casting and then into the lower pocket of the other end casting. Make certain that the support casting(s) behind the board and the radius portion of casting(s) is on the tubing. May need to spread the end castings outward at upper ends in order to get board in between the end casting flanges. This can be accomplished by loosening the cap screws a little. See diagram 2.
8. Continue to place boards into one pocket of an end casting and then into the other pocket in the order shown until last board for seat is in place. Keep best side facing out. Keep boards in front of the support casting(s). Make sure that boards center between the lugs on the support casting(s)
9. Install the .front. support tube between the two end castings seating the tubing in the radius portion of the support casting(s) and fasten with a 1/2 x 1 1/2 cap screw through a plastic spacer, through the casting, and into the threaded ends of the support tube. See diagram 3.
10. Hand snug all cap screws to square up the frame made by the tubing and end castings.



11. Go around to the back and line up the support castings so they are vertical (parallel with end casting) and properly dimensioned.
12. From the back side drill a 5/32 pilot hole approximately 1/2 inch deep and install a 1/4 x 1 screw into the .seat. boards at each slotted hole in the support casting(s).
13. Set the bench upright to finish the assembly.
14. Place a bull nose board (best side facing out) nose down, into the lower pocket of one end casting and then into the lower pocket of the other end casting. Make certain that the support casting is behind the board. May need to spread the end castings outward at upper ends in order to get board in between the end casting flanges. This is accomplished by loosening the cap screws slightly. See diagram 3.
15. Continue to place boards into one pocket of an end casting and then into the other pocket in the order shown until last board for back is in place. Keep best side facing out. Keep boards in front of the support casting(s). Make sure that boards center between the lugs on the support casting(s)
16. Tighten the four cap screws to secure the end castings to the support tubes. Make certain that the alignment between the end castings is plumb when tightening so bench doesn't rock.
17. From the back side drill a 5/32 pilot hole approximately 1/2 inch deep and install a 1/4 x 1 screw into the .back. boards at each slotted hole in the support casting(s).
18. The bench is now ready for mounting. Mounting is shown in diagram 4.

DIAGRAM 1: END CASTING AND SUPPORT TUBE ASSEMBLY 251-1005

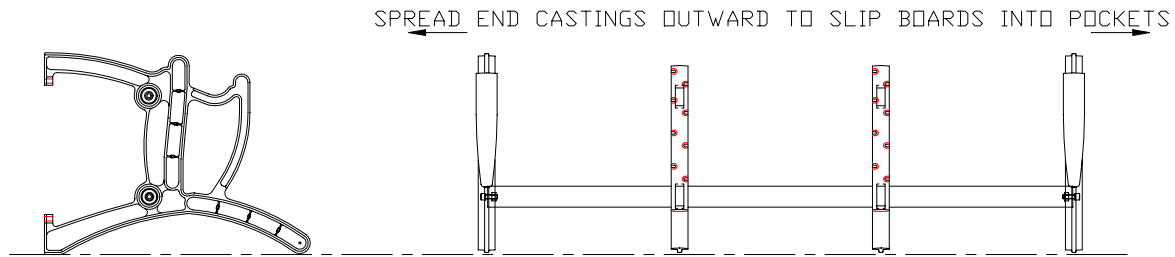


DIAGRAM 2: PLACING AND FASTENING “SEAT” BOARDS IN PLACE 251-1005

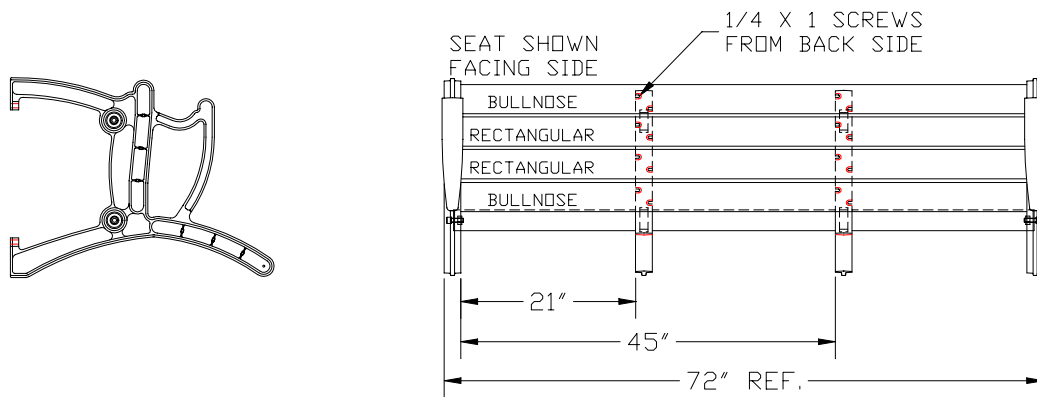


DIAGRAM 3: PLACING AND FASTENING “BACK” BOARDS IN PLACE 251-1005

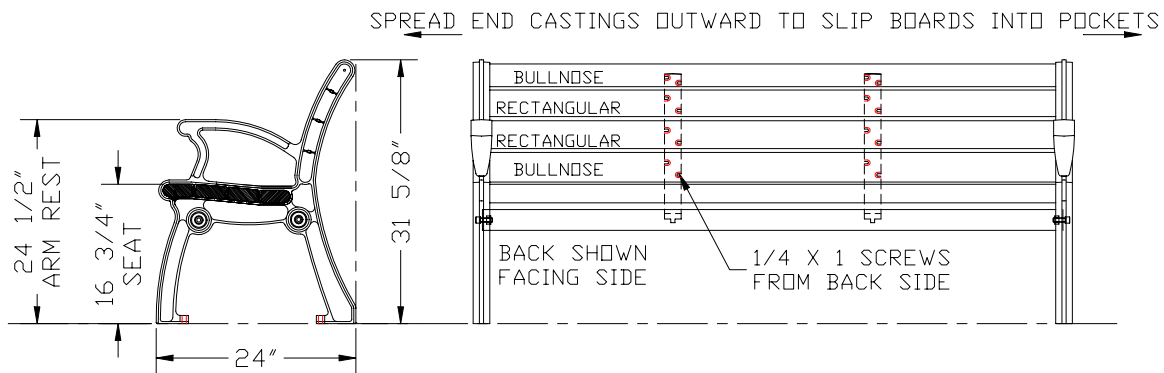




DIAGRAM 4: BENCH 6 FOOT LENGTH 251-1005, SURFACE MOUNTING

