



305-1003 SLIMLINE CHANNELIZER SPECIFICATIONS

INTENT: THIS CHANNELIZER IS A RECYCLABLE, PORTABLE ENERGY DISBURSEMENT CELL. IT IS THE INTENT OF THIS SPECIFICATION TO DESCRIBE A LIGHTWEIGHT PORTABLE PLASTIC TRAFFIC CONTROL AND GENERAL CONSTRUCTION DEVICE. THE INTENDED USE OF THIS CHANNELIZER IS TO ASSIST IN THE DELINEATION OF A WORK ZONE OR GORE AREA, STREET AND ROAD CLOSURES, AS WELL AS PROVIDING CLEAR DELINEATION FOR TRAFFIC CHANNELIZATION, PEDESTRIAN SAFETY, AND CONSTRUCTION AREAS. ACTUAL UNIT MEASUREMENTS ARE NOMINAL AND MAY BE SUBJECT TO CHANGE.

SCOPE: THIS SPECIFICATION RECOGNIZES THE NEED FOR A LIGHTWEIGHT, PORTABLE TRAFFIC CONTROL DEVICE TO PERFORM SOME OF THE FUNCTIONS OF LONGITUDINAL CHANNELIZING BARRICADES, CONES, BARRELS, TYPE I, II, III, BARRICADES AND OTHER SUCH DEVICES USED TO CONTROL, DIRECT, CHANNEL AND STOP VEHICULAR AND PEDESTRIAN TRAFFIC FOR PURPOSES OF AIDING IN CONTAINMENT AND/OR SAFETY.

CONSTRUCTION: THIS CHANNELIZER IS MADE USING ROTATIONAL MOLDING TO INSURE WATERTIGHTNESS AND INTEGRITY. THE UNIT IS MANUFACTURED WITH INTERNALLY MOLDED BAFFLES IN ORDER TO MAINTAIN ITS SHAPE, BE PROPERLY SEALED AND LEAKPROOF. THE UNIT IS PROVIDED WITH DRAINPLUGS AND UNDERSIDE GROOVES TO ALLOW FLOW OF SURFACE DRAINAGE. THE UNIT CAN ALSO BE FILLED WITH FOAM MATERIAL. THE NOMINAL DIMENSIONS OF THE UNIT ARE AS FOLLOWS:

HEIGHT: 18" BASE WIDTH INCLUDING FLANGES: 20" BASE WIDTH NOT INCLUDING FLANGES: 12"

TOP WIDTH: 6" FUNCTIONAL LENGTH: 72" MALE CONNECTION: 8" IN LENGTH

FEMALE RECESS: 7" IN LENGTH TOP FILL HOLES: 4" POST BOOT: 3.5 AND 2.5"

EMPTY WEIGHT: 38 LBS WATERFILLED WEIGHT: 330 LBS

THE UNIT IS JOINED BY A UNIQUE CONNECTION SYSTEM WHICH PROVIDES A POSITIVE INTERLOCK WHILE ALLOWING FOR APPROXIMATELY 22 DEGREES OF ARTICULATION BETWEEN UNITS. THE UNIT HAS PORTS POSITIONED ON THE BOTTOM FLANGES DESIGNED TO ALLOW FOR GROUND MOUNTING. FORKLIFT HOLES FOR EASE OF MOBILITY WHEN FILLED. POST BOOTS AT THE BOTTOM INTERIOR OF THE UNIT TO ALLOW SIGN AND FENCE POST MOUNTING.

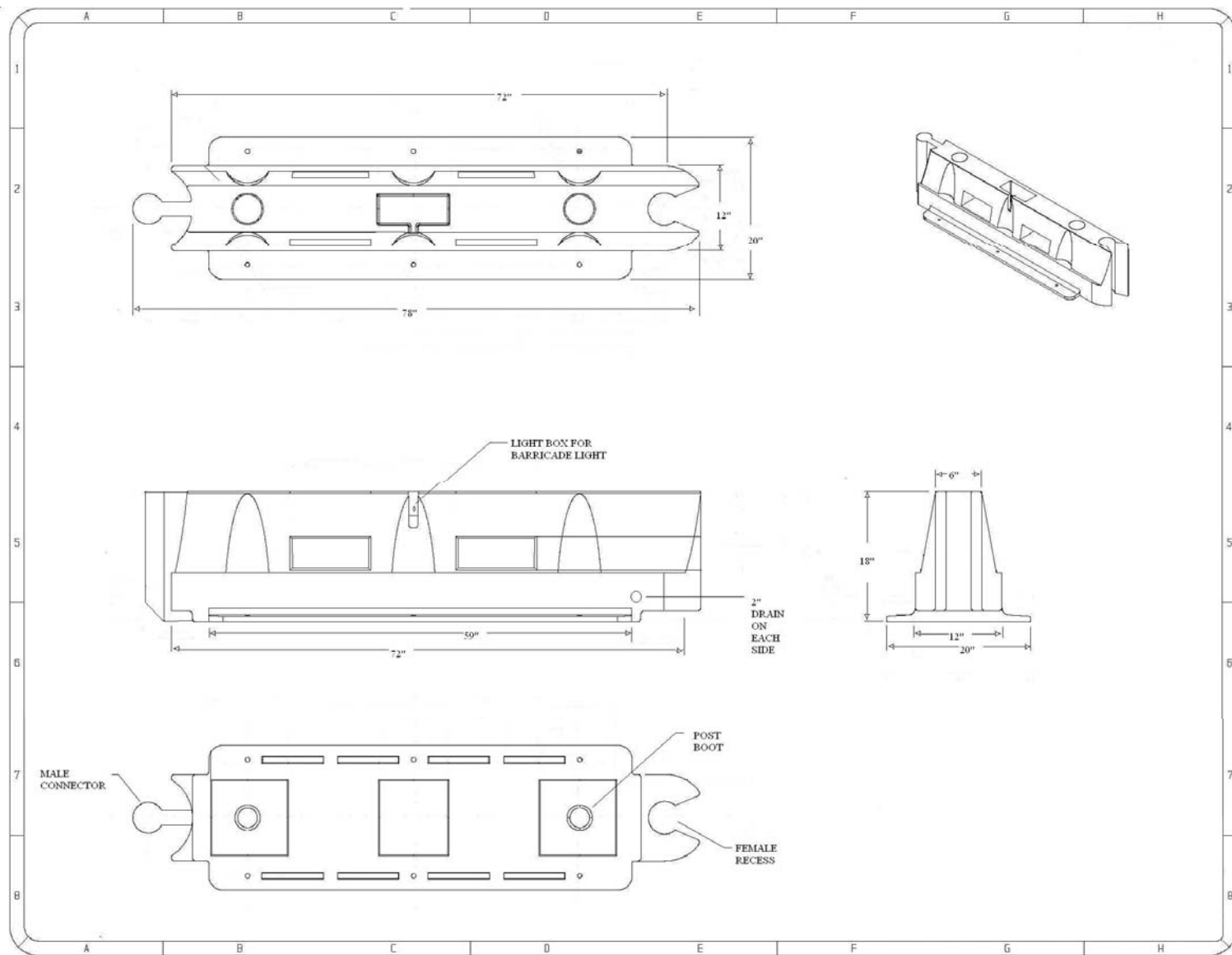
MATERIAL: THE MATERIAL IS A RECYCLABLE POLYETHYLENE. IT IS ROTATIONALLY MOLDED TO A THICKNESS OF APPROXIMATELY .150 FOR THE STANDARD UNITS AND .250 WITH THE OPTIONAL HEAVY DUTY UNIT.

ULTRAVIOLET LIGHT: AN ULTRAVIOLET LIGHT INHIBITOR IS INTRODUCED INTO THE RAW MATERIAL MIX TO PROVIDE SUFFICIENT PROTECTION TO ENSURE REASONABLE LIFE OF THE PRODUCT IN REASONABLE WEATHER CONDITIONS.

COLORS: THE STANDARD COLORS OF THE 305-1003 IS OPAQUE IVORY AND ORANGE. OTHER COLORS MAY BE INTRODUCED FROM TIME TO TIME AS REQUIRED TO COMPLY WITH STATE AND FEDERAL REGULATIONS. CUSTOM COLORS ARE AVAILABLE FOR SPECIAL ORDERS.

INSTALLATION: THE UNITS CAN BE INTERLOCKED END TO END. WHEN INSTALLED AS A WORK ZONE SAFETY DEVICE OR ROAD CLOSURE THE UNITS MAYBE USED EMPTY, BALLASTED, OR COMPLETELY FILLED WITH WATER. WARNING FLAGS, STEADY BURNING LIGHTS OR FLASHING LIGHTS CAN BE SECURELY MOUNTED TO EACH UNIT IF CONDITIONS REQUIRE.

Highland Products Group
3350 NW BOCA RATON BLVD., SUITE B2 • BOCA RATON, FL • 33431
PHONE: 561.620.7878 • FAX: 561.620.8668



Highland Products Group
 3350 NW BOCA RATON BLVD., SUITE B2 • BOCA RATON, FL • 33431
 PHONE: 561.620.7878 • FAX: 561.620.8668