



5'-0" x 10'-0" Aluminum Shelter - With Bench

GENERAL SHELTER SPECIFICATIONS:

A. GENERAL: Unassembled modular shelter is fabricated from low maintenance, lightweight corrosive resistant aluminum (factory fabricated). Site assembly required.

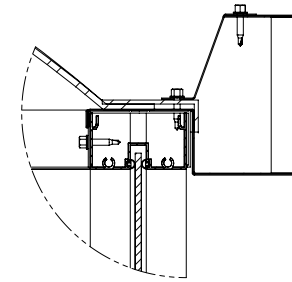
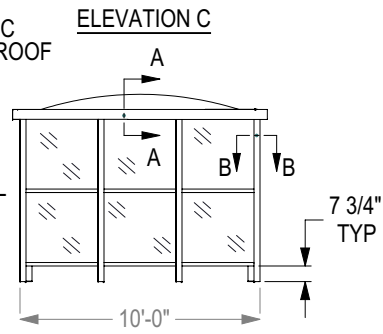
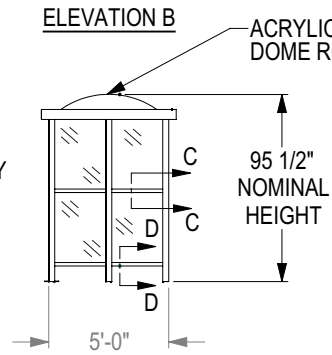
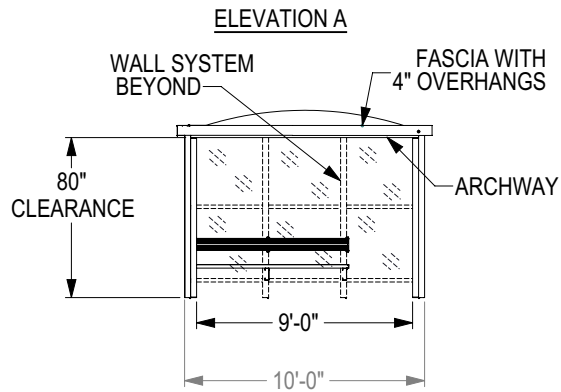
1. DIMENSIONS: 5'-0" wide X 10'-0" long, 95 1/2" nominal exterior height.
2. FRAME CONSTRUCTION: Provide structural framing of 6063-T6 aluminum alloy extrusions. Members shall have a Quaker Bronze or Austin white finish. Connections shall be fastened internally to framing systems using mechanical fasteners or MIG welded where necessary. Exposed fasteners on framing systems are not acceptable. Standard 7 3/4" ventilation space at bottom of unit.
3. ROOF: Constructed using a 1/4" acrylic dome. Roof drains into full perimeter gutter system.
4. WINDOWS: Fixed windows are single pane 1/4" minimum clear tempered safety glass, glazed within wall system extrusions and not fastened to exterior wall. Glass sealed with concealed gasket system.
5. ANCHORING: Shelter installation requires concrete pad to be 12" minimum larger than shelter in both length and width dimensions. Pad must be level within 1/2" over length and width of structure. Shelter to be anchored to pad using height adjustable aluminum boot and anchored down using 1/4" x 2" drive pins.

INSTALLATION: Unit is knocked down and crated, off loaded and installed by others.

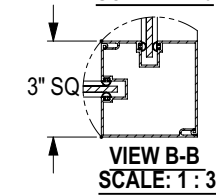
INCLUDED OPTIONS:

(1) 80" ALUMINUM BENCH, COLOR TO BE BRONZE OR CLEAR ANODIZED, (SHIPPED LOOSE, INSTALLED BY OTHERS)

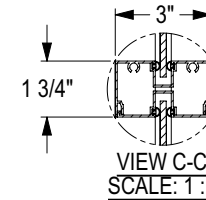
Notice- The manufacturer claims proprietary rights in the information disclosed on this drawing. It is issued in confidence for engineering information only and may not be used, in whole or in part, to manufacture anything whether or not shown hereon, reproduced or disclosed to anyone without direct written permission from the manufacturer.



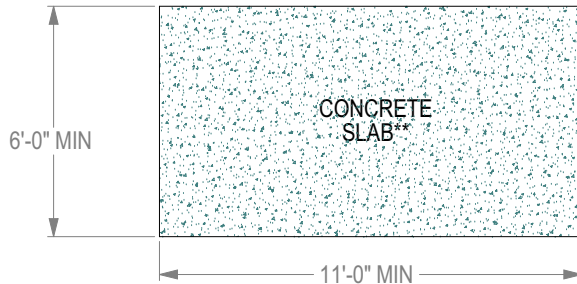
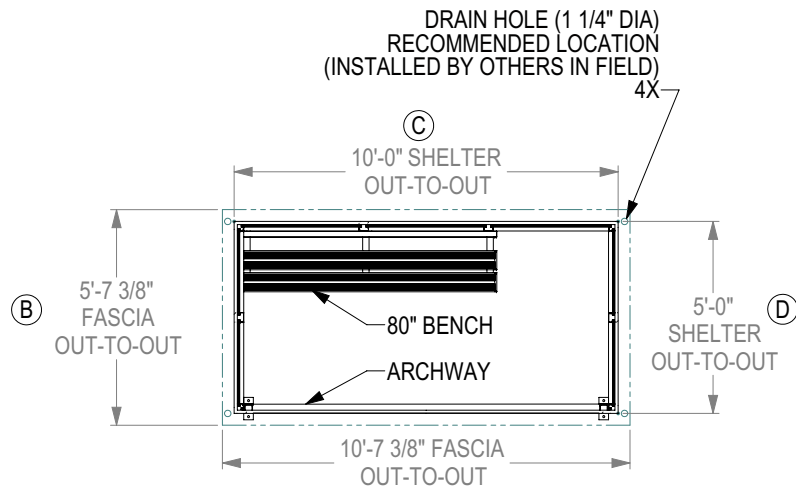
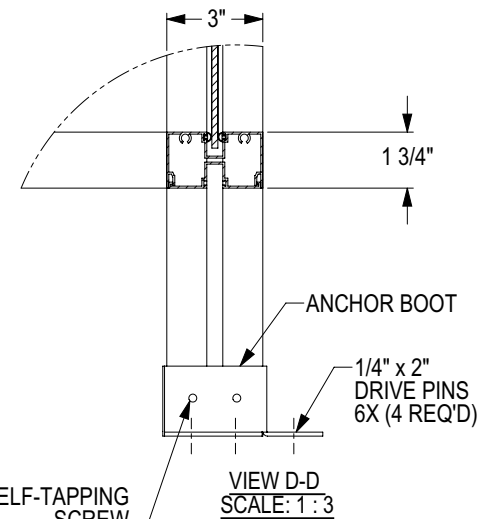
VIEW A-A
SCALE: 1:3



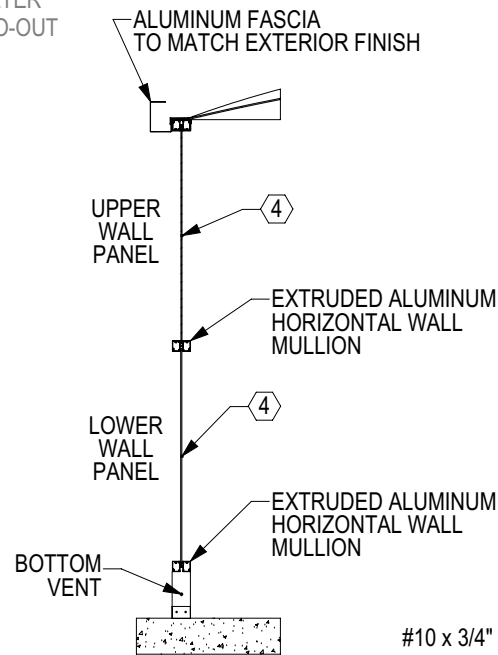
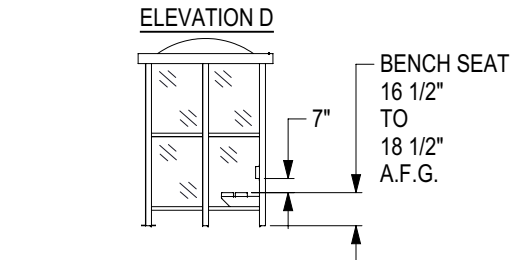
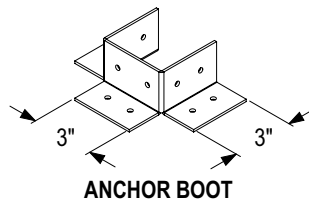
VIEW B-B
SCALE: 1:3



VIEW C-C
SCALE: 1:3



** NOTE: CONCRETE SLAB DESIGN BY OTHERS. DIMENSIONS SHOWN ARE RECOMMENDED MINIMUM SIZES ONLY.



5'-0" x 11'-6"

GENERAL SHELTER SPECIFICATIONS:

Aluminum Shelter - With Bench

A. GENERAL: Unassembled modular shelter is fabricated from low maintenance, lightweight corrosive resistant aluminum (factory fabricated). Site assembly required.

1. DIMENSIONS: 5'-0" wide X 11'-6" long, 95 1/2" nominal exterior height.

2. FRAME CONSTRUCTION: Provide structural framing of 6063-T6 aluminum alloy extrusions. Members shall have a Quaker Bronze or Austin white finish. Connections shall be fastened internally to framing systems using mechanical fasteners or MIG welded where necessary. Exposed fasteners on framing systems are not acceptable. Standard 7 3/4" ventilation space at bottom of unit.

3. ROOF: Constructed using 1/4" high acrylic dome. Roof drains into full perimeter gutter system.

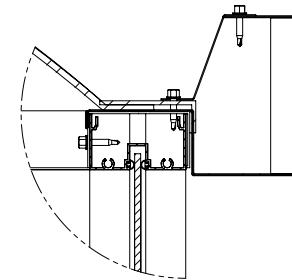
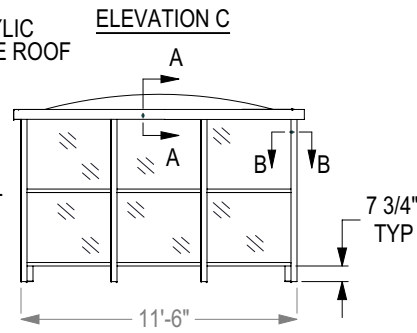
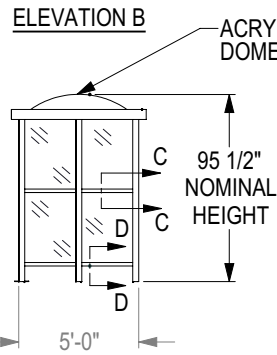
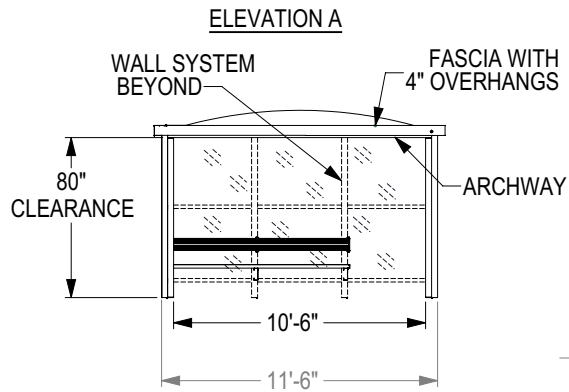
4. WINDOWS: Fixed windows are single pane 1/4" minimum clear tempered safety glass, glazed within wall system extrusions and not fastened to exterior wall. Glass sealed with concealed gasket system.

5. ANCHORING: Shelter installation requires concrete pad to be 12" minimum larger than shelter in both length and width dimensions. Pad must be level within 1/2" over length and width of structure. Shelter to be anchored to pad using height adjustable aluminum boot and anchored down using 1/4" x 2" drive pins.

INSTALLATION: Unit is knocked down and crated, off loaded and installed by others.

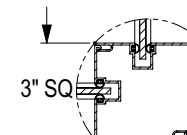
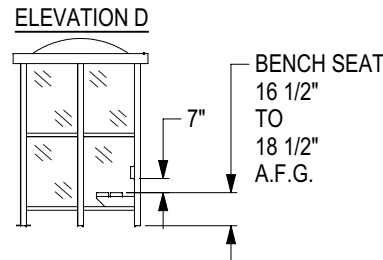
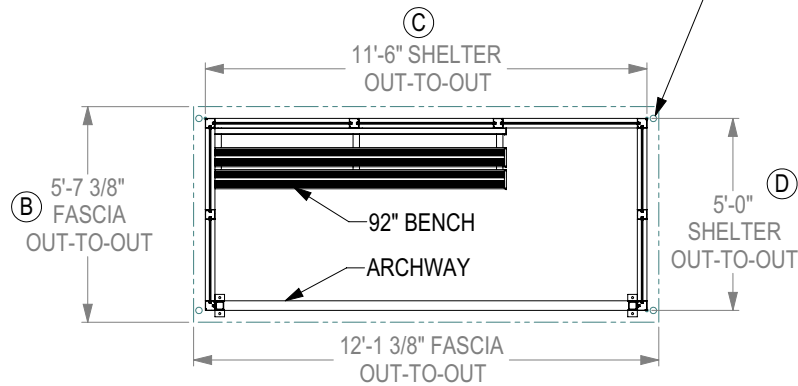
INCLUDED OPTIONS:

(1) 92" ALUMINUM BENCH, COLOR TO BE BRONZE OR CLEAR ANODIZED, (SHIPPED LOOSE, INSTALLED BY OTHERS)

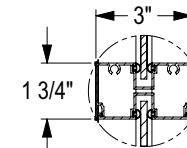


VIEW A-A
SCALE: 1 : 3

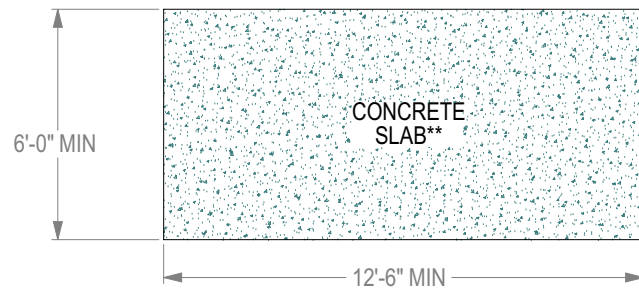
DRAIN HOLE (1 1/4" DIA)
RECOMMENDED LOCATION
(INSTALLED BY OTHERS IN FIELD)



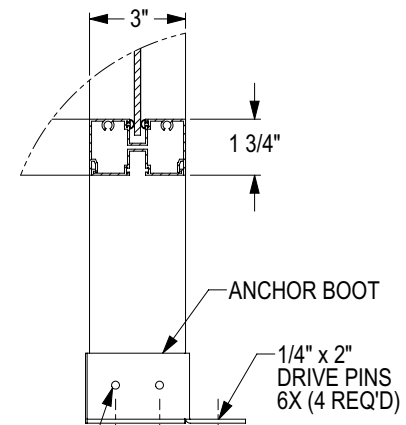
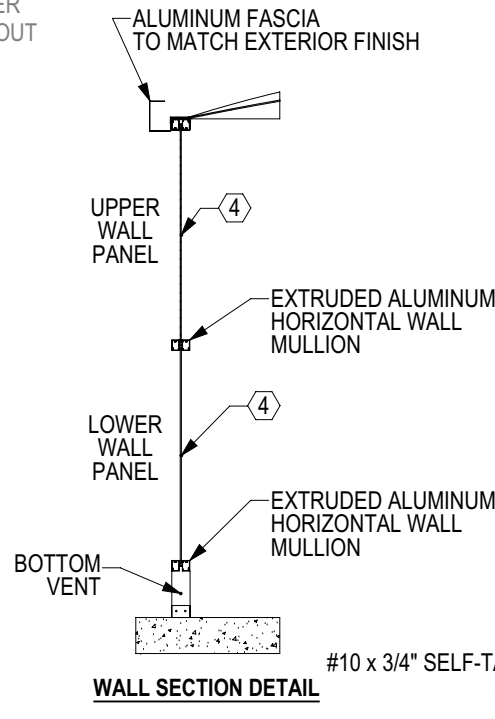
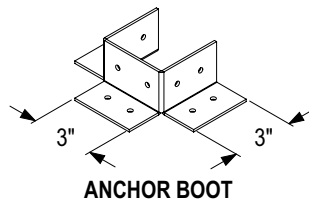
VIEW B-B
SCALE: 1 : 3



VIEW C-C
SCALE: 1 : 3



** NOTE: CONCRETE SLAB DESIGN BY OTHERS.
DIMENSIONS SHOWN ARE RECOMMENDED
MINIMUM SIZES ONLY.



VIEW D-D
SCALE: 1 : 3

5'-9" x 11'-6"

Aluminum Shelter - With Bench

GENERAL SHELTER SPECIFICATIONS:

A. GENERAL: Unassembled modular shelter is fabricated from low maintenance, lightweight corrosive resistant aluminum (factory fabricated). Site assembly required.

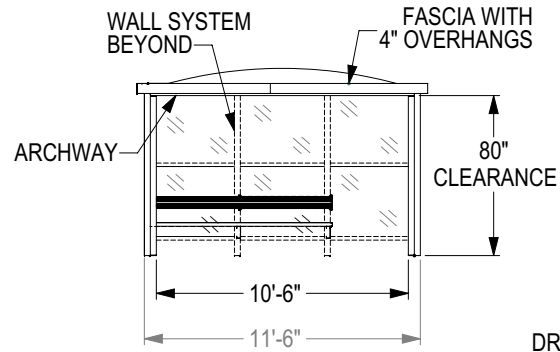
1. DIMENSIONS: 5'-9" wide X 11'-6" long, 95 1/2" nominal exterior height.
2. FRAME CONSTRUCTION: Provide structural framing of 6063-T6 aluminum alloy extrusions. Members shall have a Quaker Bronze or Austin white finish. Connections shall be fastened internally to framing systems using mechanical fasteners or MIG welded where necessary. Exposed fasteners on framing systems are not acceptable. Standard 7 3/4" ventilation space at bottom of unit.
3. ROOF: Constructed using a 1/4" acrylic dome. Roof drains into full perimeter gutter system.
4. WINDOWS: Fixed windows are single pane 1/4" minimum clear tempered safety glass, glazed within wall system extrusions and not fastened to exterior wall. Glass sealed with concealed gasket system.
5. ANCHORING: Shelter installation requires concrete pad to be 12" minimum larger than shelter in both length and width dimensions. Pad must be level within 1/2" over length and width of structure. Shelter to be anchored to pad using height adjustable aluminum boot and anchored down using 1/4" x 2" drive pins.

INSTALLATION: Unit is knocked down and crated, off loaded and installed by others.

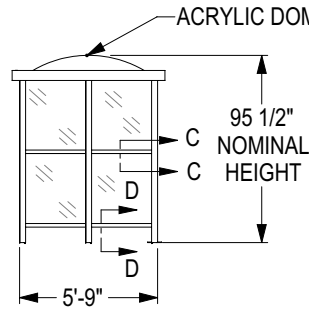
INCLUDED OPTIONS:

(1) 92" ALUMINUM BENCH, COLOR TO BE BRONZE OR CLEAR ANODIZED, (SHIPPED LOOSE, INSTALLED BY OTHERS)

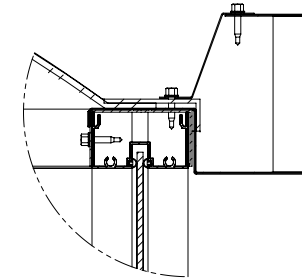
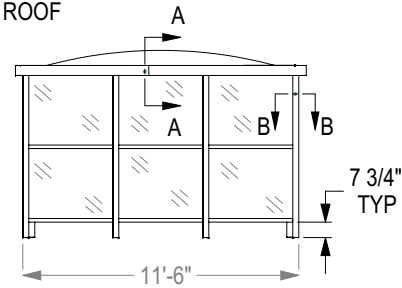
ELEVATION A



ELEVATION B

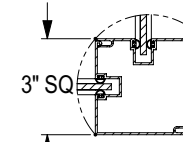
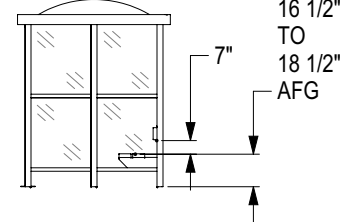


ELEVATION C

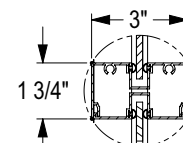


VIEW A-A
SCALE: 1 : 3

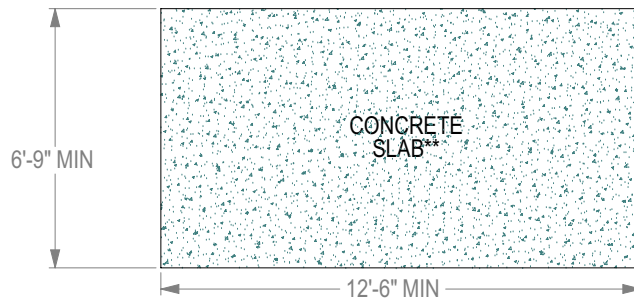
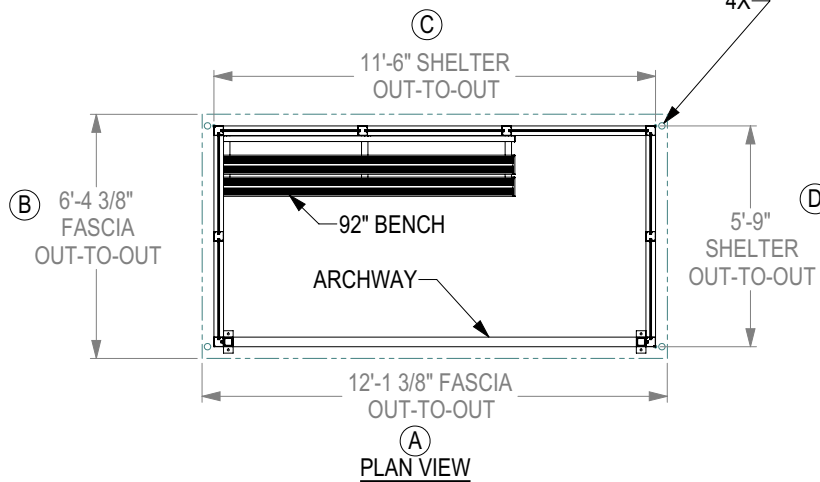
ELEVATION D



VIEW B-B
SCALE: 1 : 3



VIEW C-C
SCALE: 1 : 3



** NOTE: CONCRETE SLAB DESIGN BY OTHERS. DIMENSIONS SHOWN ARE RECOMMENDED MINIMUM SIZES ONLY.

