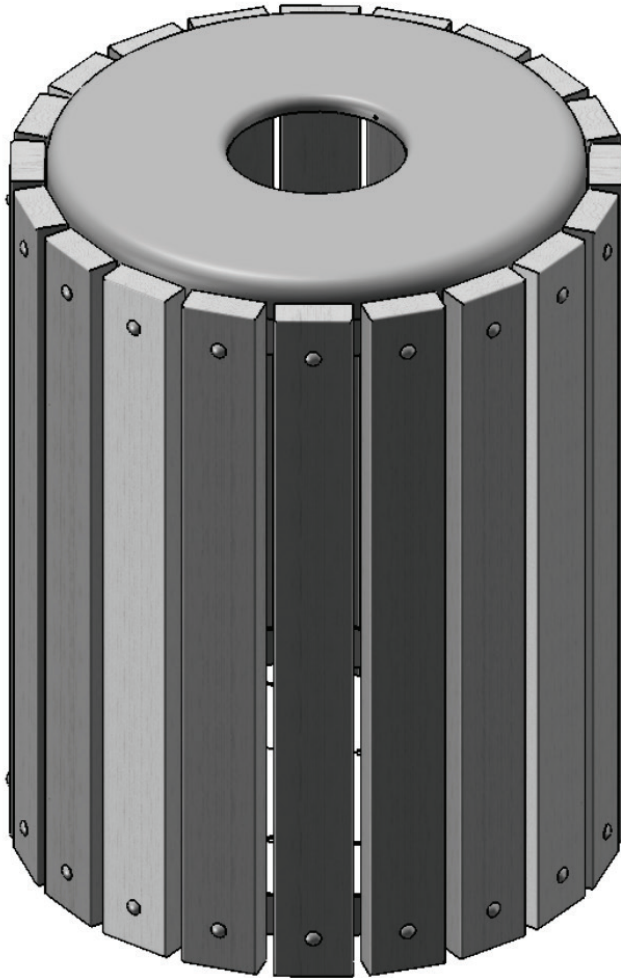


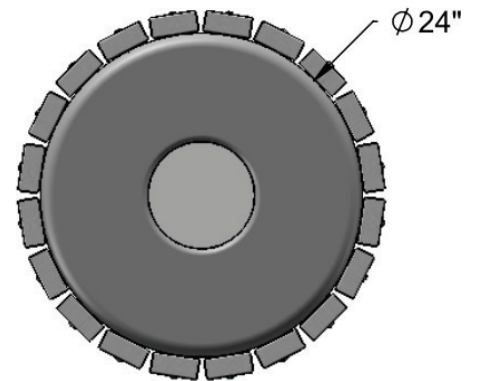
## Wood Slat Trash Receptacle

Model: 398-1470

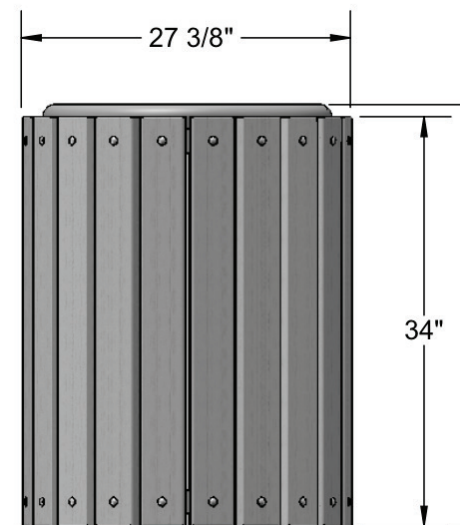
### Specifications



Top View



Front View



### Product Details:

Slats	Planking is made from 2" x 4" No. 1 KDAT Southern Yellow Pine ACQ pressure treated lumber, 2" x 4" No. 1 Southern Yellow Pine, finished in redwood stain with wood preservative, or 2" x 4" No. 1 Southern Yellow Pine.
Frame	Rings are 3/16" x 2" flat. Bottom plate is precision punched from 12 ga. steel sheet. All electrically MIG welded.
Frame Coating	Hot dipped galvanized.
Hardware	All hardware fasteners are zinc coated.
Dimensions	26" Diameter. trash receptacle has an overall height of 34".

*\*subject to change without notice*