

# Water Filled Barrier with Swivel Pin

Item #: 516-1001



Constructed of high-density polyethylene  
Can be filled with sand or water to increase weight

### BEST USES

Temporary work zones, Road Detours, Sporting Events, Construction Projects, Demolition Areas, Theme Parks, Airports, Parking Garages

### Specialty Features

- Easy Transportation
- Safety colors
- Interlocks
- 90 degree turn radius
- Light weight
- When filled
- End Result

### Advantages

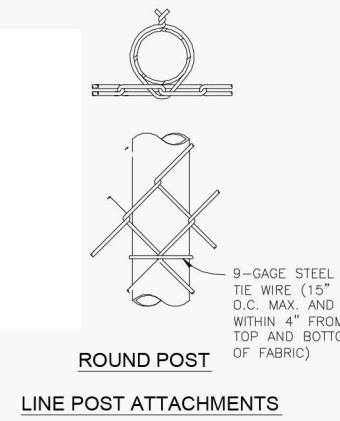
- Light weight/ up to 800 LFT per truck
- Orange/White Standard
- Custom Colors Available
- Links together with a swivel pin
- Can conform to any road way design
- No heavy machinery needed to install
- Can be picked up by forklift
- Saves time and money

### SPECIFICATIONS MODEL

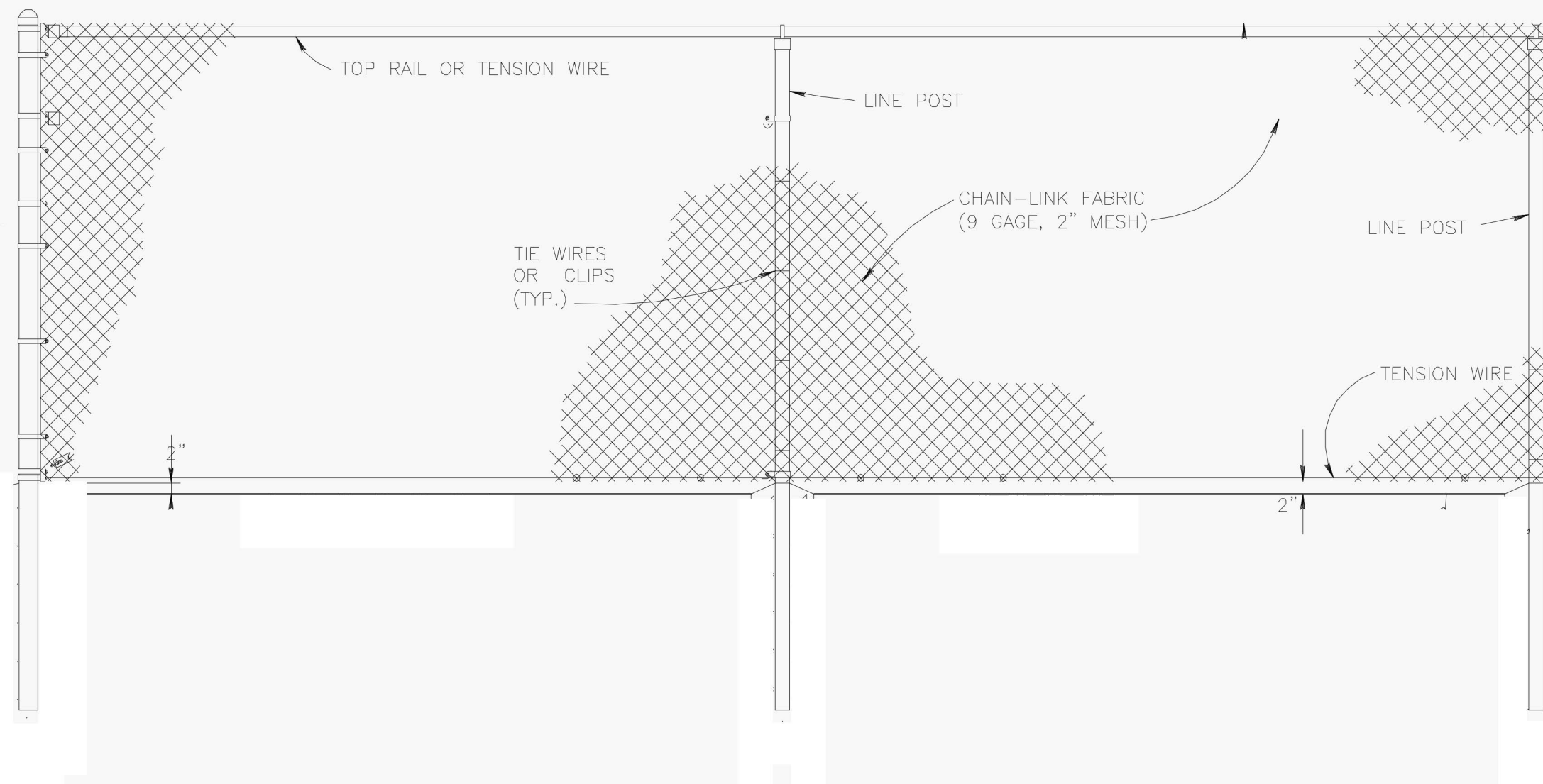
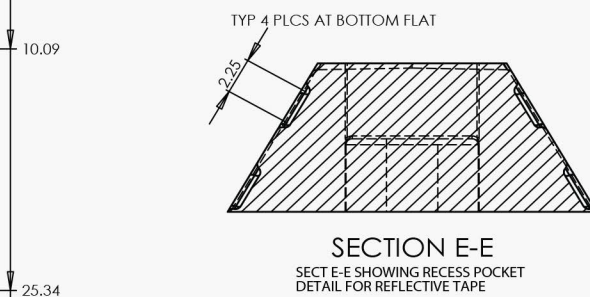
Length	60"	1510mm
Height	36"	900mm
Top Width	7 5/8"	190mm
Base Width	24"	600mm
Weight Empty	50 lbs.	23 kg
Weight Filled	683 lbs.	310 kg



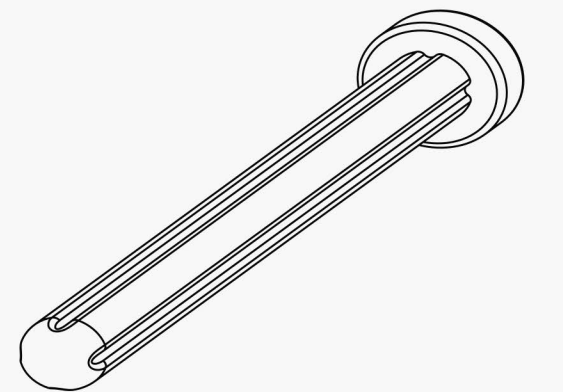
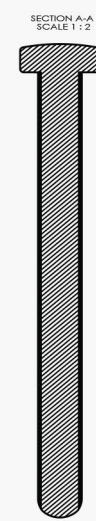
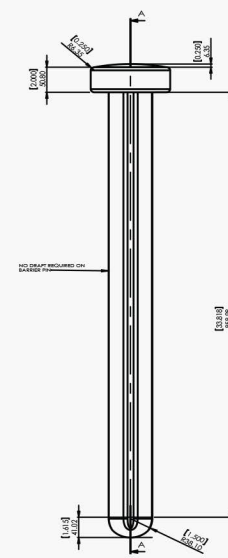
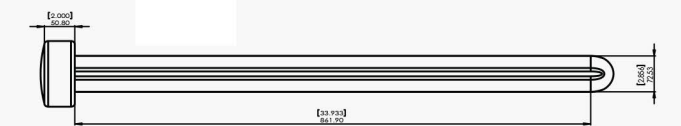
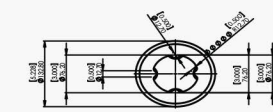
Item #: 516-1001



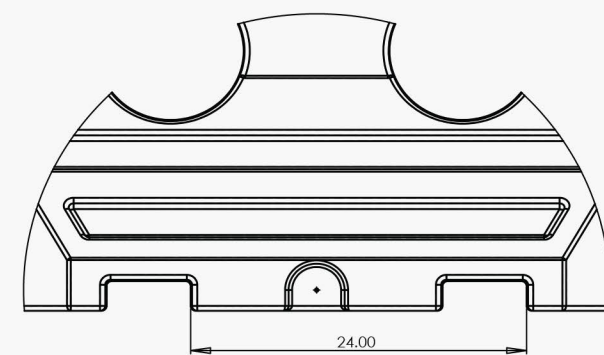
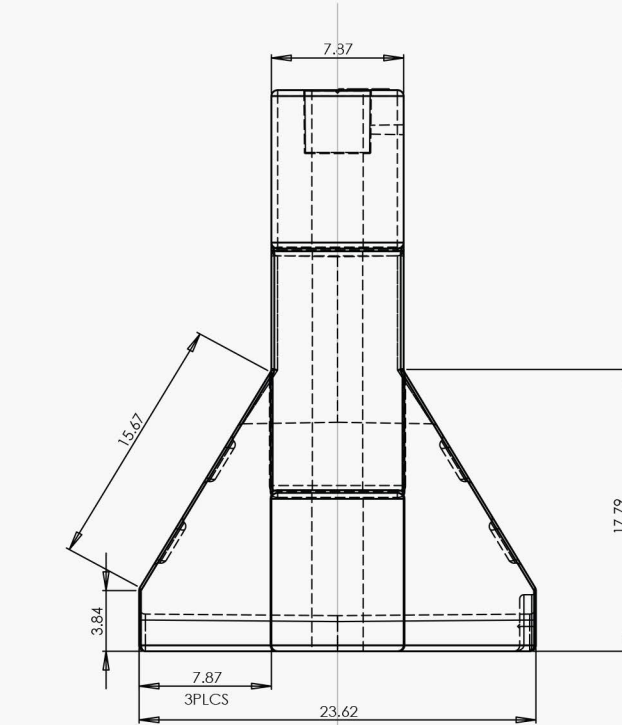
- 
- THIS DIMENSION IS NOT A CENTER LINE DIMENSION FOR THE THRU-HOLES. THIS IS KNUCKLE-RADIUS TANGENT POINT.
- 59.45
- 59.25
- 0
- 10.00
- 15.75
- $\varnothing 10.45$
- 20.87
- 15.16
- 10.09
- 15.25
- 25.34
- 10.00
- 15.43
- 25.43
- 35.06
- 35.43
- 10.09
- 2.25
- 4.02
- 18.59
- 6.00
- 24.00
- 3.50
- R2.00
- 51.18
- E
- E
- D
- MOLDED THREADS FOR DRAIN PLUG 1 1/4-12
- 0.2



96" Height  
60" Above Barrier



## Optional Pin When No Fence Is Required



DETAIL D  
SCALE 1 : 6  
REV 2 SHOWING TRUE CENTER TO CENTER  
DIMENSIONS OF FORK THRU-HOLES