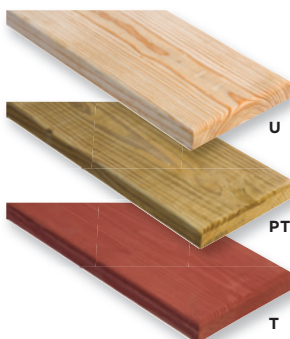


## PLANK STYLES AND COLOR OPTIONS



## WOOD PLANKS

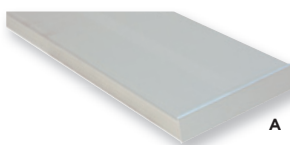
- 2" x 10" and 2" x 4" sizes
- Rounded edges
- #1 southern yellow pine

**(U) UNTREATED****(PT) PRESSURE TREATED**

- Environmentally friendly (ACQ)
- Kiln dried before and after treatment

**(T) REDWOOD STAIN**

- Sealed in redwood stain with wood preservative

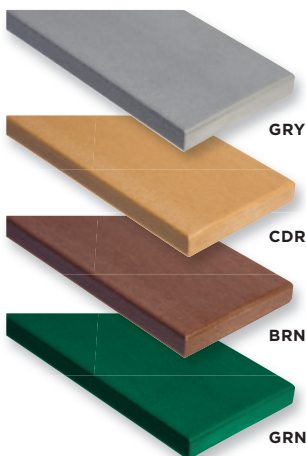


## ALUMINUM PLANKS

- 2" x 10" size
- 6063-T6 extruded aluminum alloy

**(A) ANODIZED**

- Used for table tops, seats, and backs on most products



## RECYCLED PLANKS

- 2" x 10", 2" x 4", 3" x 4", and 4" x 4" sizes
- Rounded edges
- 100% recycled plastic with color
- Ask about custom color options

**(GRY) GRAY****(CDR) CEDAR****(BRN) BROWN****(GRN) GREEN**

Most 2" x 10" recycled plastic planking is reinforced with steel flat bars to prevent sagging and warping.