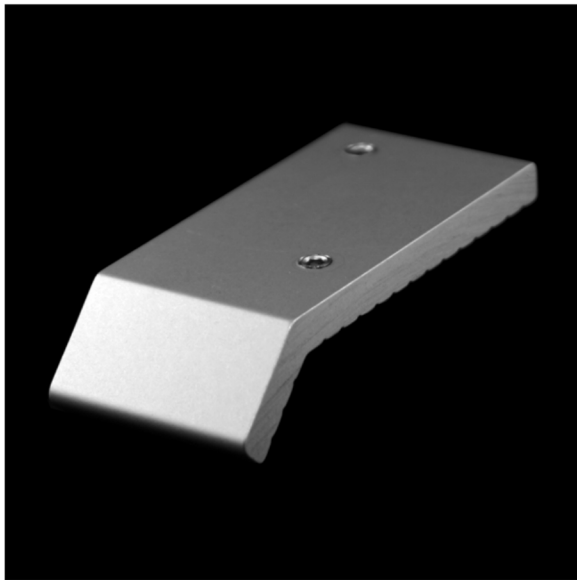


## Model No. 161-1003

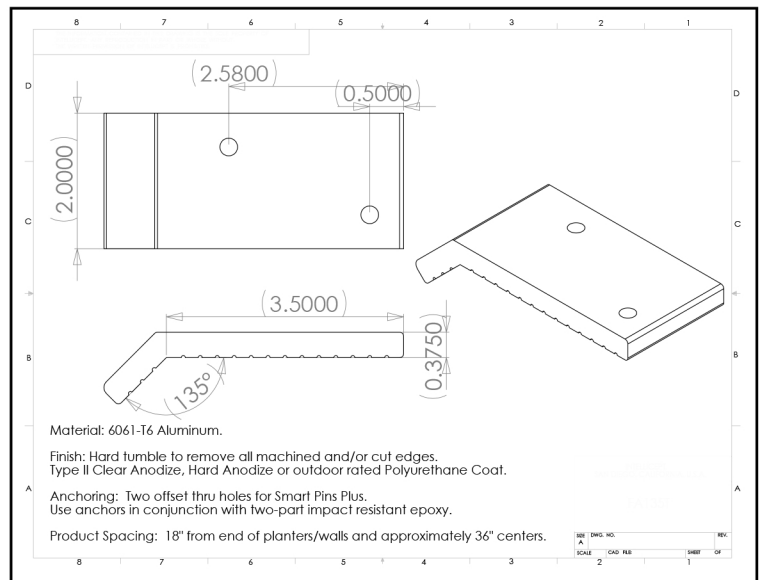
### Skate Stopping Clip

### for 3/4" Chamfered Edge

**Description:** This part is designed for 3/4" chamfered edge walls (walls with a 45 degree cut off the corner.) Model 161-1003 is most commonly used on poured concrete, but it may be used on granite, marble or pre-cast concrete. This part uses two SMART PINS PLUS anchors. For 1/2" chamfer see Model. No. 161-1003 Short.



(shown in Clear Anodized)



**Material:** 6061-T6 Aluminum

**Finish:** Hard tumbled to remove all machined and/or cut edges. Aluminum finish options include Type II Clear Anodize or Hard Anodize.

**Corner Radius:** For 3/4" or greater chamfer corner.

**Outside Dimensions:** 2" (wide) x 3-1/2" (deep) x 1-1/8" (tall)

**Anchoring:** Anchored with two offset thru holes for SMART PINS PLUS anchors. Use anchors in conjunction with two-part epoxy.

**Product Spacing:** 18" from end of planters/walls and approximately 36" centers. Do not apply at grout joints.