

## Model No. 136-1066 Firering



- 510 square inches of cooking surface
- Cooking grate tips back for easy fire building and cleaning
- Public use-type spring grips of coiled steel bar
- No leveraged pinch points between grate and ring
- Choice of large open fire or small fire under grate for cooking
- Firering tips back for easy cleaning
- Tip-back anchors embedded in concrete footings provide permanent location
- Quality construction throughout

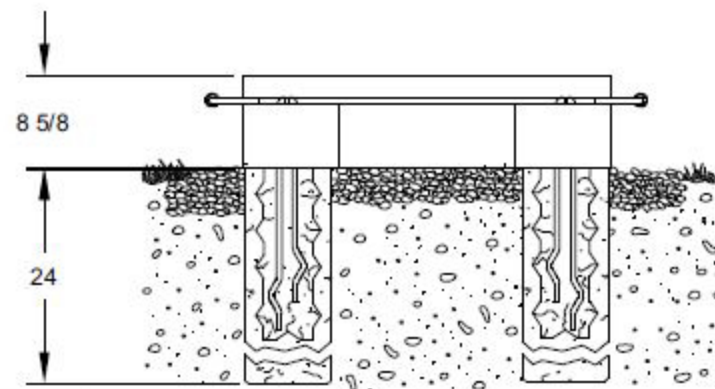
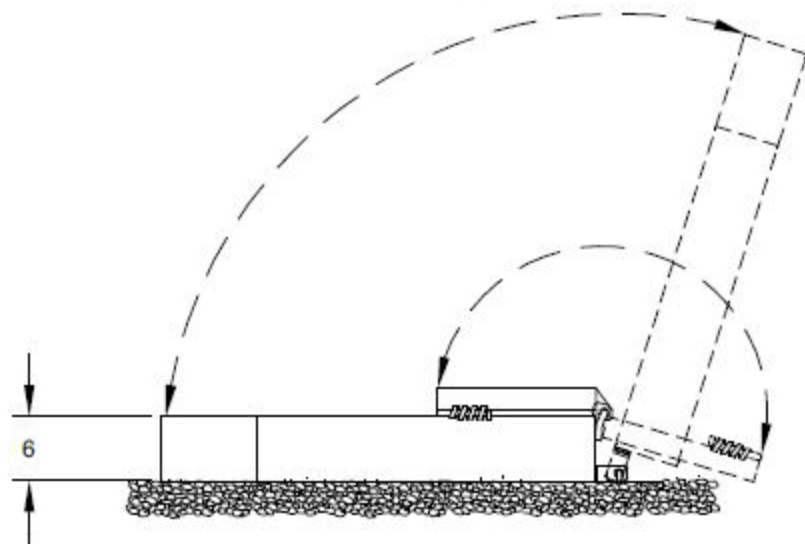
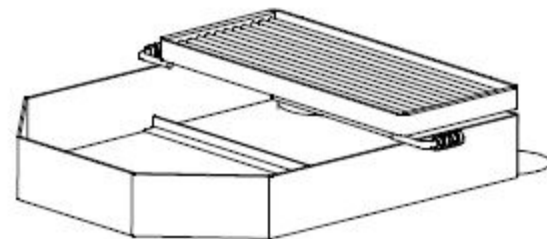
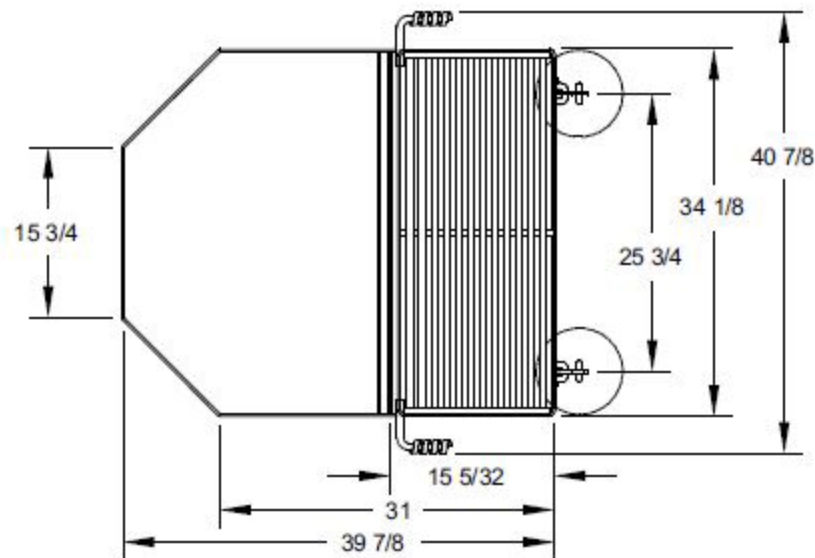
### SPECIFICATIONS:

- **No. 136-1066** firering is 34" x 40" with a 6" high fire barrier constructed of 1/4" plate steel and cross braced with 1-1/4" x 1-1/4" x 3/16" A-36 steel angle.
- Unit is permanently installed and tips upward for easy cleaning on hinged anchor devices with two 1/2" dia. steel "U" anchor pins with deformed ends that insert 15" into concrete footings.
- 510 sq. in. grate is 9" above ground level and is constructed from 1/2" dia. A-36 steel rods spaced 1-1/8" on centers and held securely in heat expansion channels to allow rods to expand under heat. Grate perimeter is constructed of 1/4" x 3" steel flat bar on the front and 1/4" x 2" steel flat bar on the sides and rear and is permanently attached and hinged at rear to tip back.
- Grill design provides 1" gap on sides to eliminate leveraged pinch point as grate closes on firebox.
- Grate is provided with two substantially constructed coil spring grips suitable for public use made from 1/8" x 1/2" flat steel bar (not wire springs).
- Entire unit is finished in high temperature, heat resistant, nontoxic black enamel.
- **Optional:** Ring is provided with two heavy anchors of 1-3/4" x 1-3/4" x 3/16" A-36 steel angle with welded-on spades of 1/8" thick steel and a 1/2" dia. A-36 steel rod to anchor unit to ground without concrete footings and allow tipping back for cleaning

### AVAILABLE OPTIONS

Tip-back angle spade anchors

**The Park and Facilities Catalog**  
220 Congress Park Dr. #215 Delray Beach, FL 33445  
www.theparkcatalog.com Ph: 800-695-3503



ALL DIMENSIONS IN INCHES

The Park and Facilities Catalog  
220 Congress Park Dr #215  
Delray Beach, FL 33445

DRAWN BY  
**WWM**

TITLE  
MODEL NO. 136-1066 LARGE GROUP FIRERING

DATE 10-06-08

DWG. NO. AI-1755