



- Two infinitely adjustable cooking grates
- Structurally reinforced grates are virtually indestructible
- Grates tip back for fire building and cleaning
- Integral ash retainer flange prevents ashes from falling from the firebox and combats heat warpage
- Firebox bottom is ring-reinforced against heat warpage
- Theft-proof base attachment
- Full 360° rotation for draft control
- Public use-type spring grips of coiled steel bar
- Utility shelf option
- Quality construction throughout

AVAILABLE OPTIONS

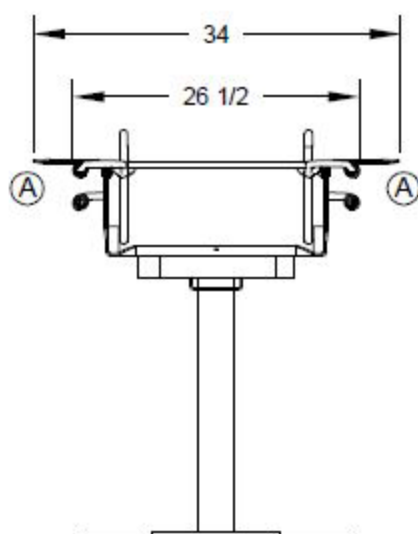
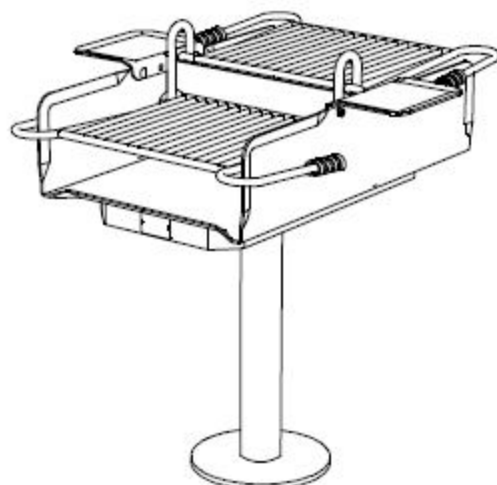
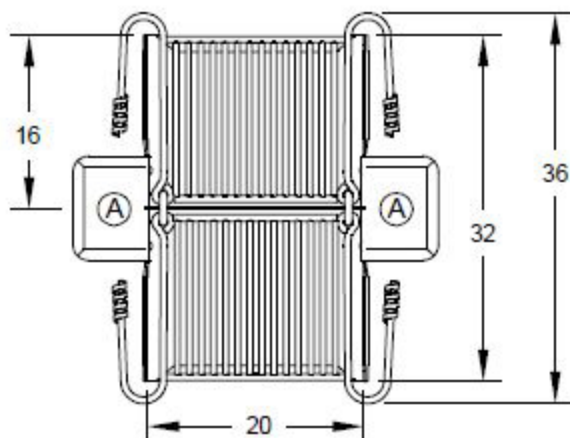
- One or Two Side Utility Shelves
- Portable Disk Base
- Bolt-down Base Plate Base
- Portable Caster Base

SPECIFICATIONS:

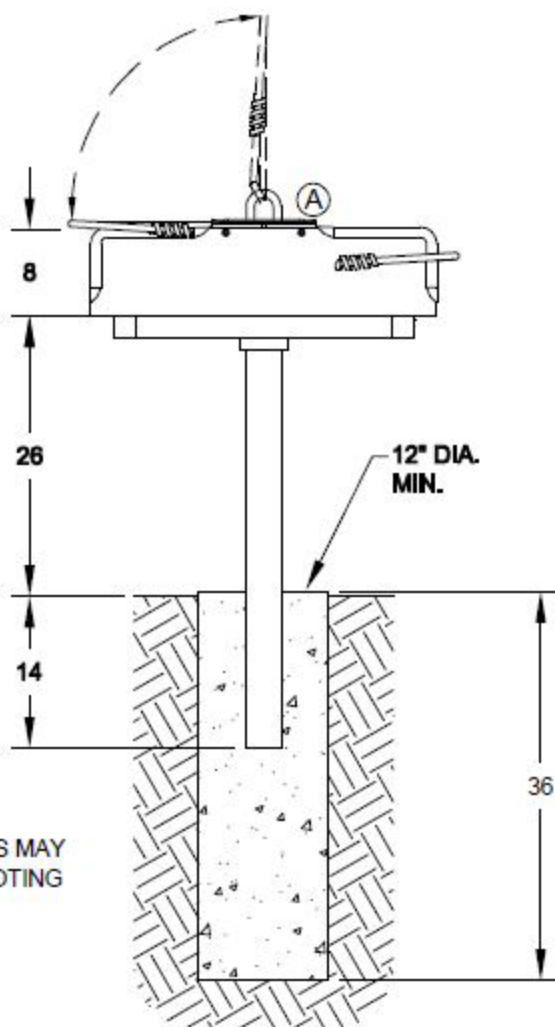
- **Model 136-1041** has a cooking area of 640 sq. in. with two grates and a 20" x 32" firebox with nom. 8" high sides and a center dividing panel.
- Entire firebox is fabricated from 3/16" steel plate. All exposed corners are rounded to 1-1/2" radius and all edge connections are entirely welded. Firebox is ring reinforced and allowance for drainage is provided. The firebox has an integral ash retainer die-formed across the open ends of the firebox.
- Grates are infinitely adjustable from 3-3/4" to 10-1/2" above the bottom of the firebox and tip back to provide unobstructed access to the firebox for cleaning and fire building.
- Grates is structurally reinforced so that they will support the weight of two or more persons without sagging or bending.
- Grates are secured to firebox by 2 vertical 3/4" dia. A-36 steel bars that allow adjustment and prevent removal of grates from the grill.
- Grates are constructed from 5/8" dia. A-36 steel bars around the perimeter and handles and 1/2" dia. A-36 steel bars to provide the grate surface.
- Grates are each provided with two substantial spring grip handles suitable for use by the public made from 1/8" x 1/2" steel flat bar.
- A base attachment mechanism constructed from 3/16" steel plate is provided that is absolutely theft-proof, allows unrestrained continuous rotation in either direction and maintains a stable cooking surface.
- **Standard:** Grill is supported by a 3-1/2" O.D., 40" long, steel pipe for permanent installation in concrete footing
- Entire unit is finished in high temperature, heat resistant, nontoxic black enamel.
- **Optional:** The grill is provided with a 3/16" x 7-1/8" x 9-5/8" steel plate utility shelf.
- **Optional:** Grill is provided with a bolt-down base plate base for hard surface mounting applications.
- **Optional:** Grill is provided with a portable disc base.
- **Optional:** Grill is provided with a portable caster base.

The Park and Facilities Catalog

220 Congress Park Dr. #215 Delray Beach, FL 33445
www.theparkcatalog.com Ph: 800-695-3503



(A) OPTIONAL UTILITY SHELF



NOTE:
LOCAL SOIL CONDITIONS MAY
REQUIRE A LARGER FOOTING

ALL DIMENSIONS IN INCHES

The Park and
Facilities Catalog
220 Congress Park Dr.
Delray Beach FL 33445

PARK GRILL SHOWN WITH BASE & OPTIONAL UTILITY SHELF

DRAWN BY **WWM**
DATE **10-16-08**
DWG. NO. **AI-1011**