

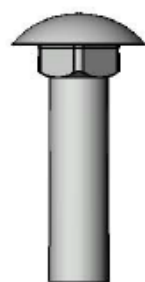
**8-Ft. Heavy-Duty ADA Aluminum Picnic Table  
398-1017**



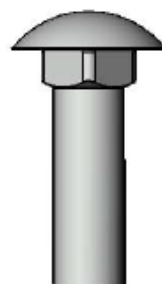
## Safety Warnings & Equipment Inspections

- Owners and installers please note these safety warnings and make use of this checklist on a regular basis.
  - Follow installation instructions when erecting equipment.
  - Ground surfaces around equipment should be restored as needed. Concrete footings should never be exposed. Surface depth should comply with ASTM and CPSC specifications.
  - Check for and repair damage caused by wear or vandalism, a major factor in injury causing situations.
  - All protruding bolts should be covered or cut off and finished smooth. Sharp edges on pipes should be capped or removed. Check for bent, broken, or severely worn pipe, and replace.
  - All equipment should be free of rust and repainted whenever necessary to deter rusting.
- We provide our customers with layout sheets and installation instructions. Please keep on file the specifications sheet that contains the listing of every part used.
- Never add components not intended for use with this product.
  - Regular maintenance is necessary in this and all park and recreational equipment to insure the safety of the user.
  - Note: Proper maintenance of equipment requires regular tightening of all bolts, nuts, and setscrews.
  - Note: Regular checking of all parts, castings, etc. should be made. If a part is broken or worn, it should be replaced immediately.
  - Check to be sure all fittings are tight and that bars and pipes do not move.
  - Replace all worn S-hooks. S-hooks must be completely closed. Failure to close S-hooks can result in serious injury to the user. NEVER reuse S-hooks.
  - Test for free movement of swing hanger and other moving attached parts.
  - Check for worn chains and replace them.
  - A soft resilient surface should be placed under all swings extending at least twice the height of the top rail both front and back.

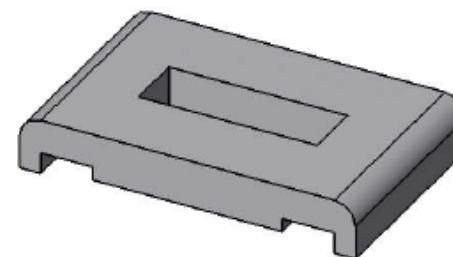
**Hardware**



5/16" x 1-1/4"  
Carriage Bolt



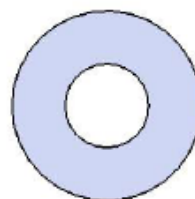
3/8" x 1-1/4"  
Carriage Bolt



Aluminum Clip



5/16" Washer



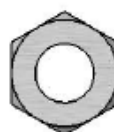
3/8" Washer



#8 1/2" SS Philips  
Panhead Tek

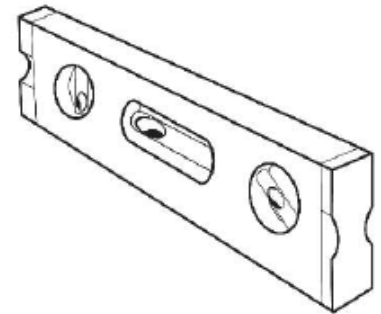
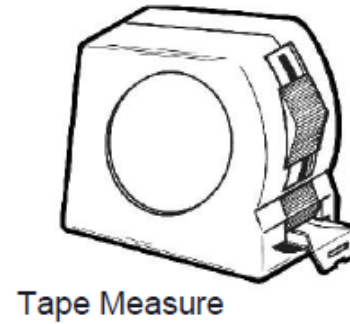
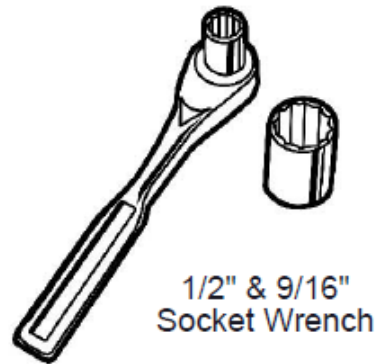
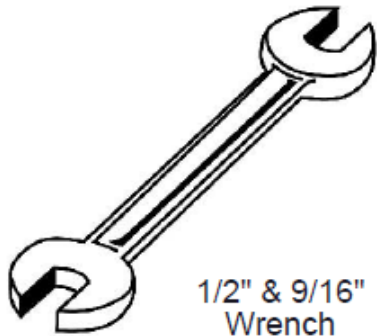


5/16" Hex Nut



3/8" Hex Nut

**Tools Required**



## Product Specifications

**Top & Seats:** Aluminum planking shall be 2"x10" with a minimum thickness of not less than .078 and a fluted non-skid surface. Table and seat planking shall be anodized 6063-T6 extruded aluminum alloy.

**Frame:** 2-3/8" O.D. x 12 gauge pre-galvanized structural steel tubing. Cross braces 1 5/16" O.D. x 14 gauge pre-galvanized structural steel tubing. Brace attachment points 1-1/2"x1-1/2"x3/16" steel angle. Seat and top mounting points are 2" x 2" x 3/16" precision punched steel angle. Legs are bent over a mandrel through the bend radius producing a wrinkle free bend. All electrically MIG welded.

**Frame Coating:** Hot dipped galvanized or electrostatic powder coated application oven cured.

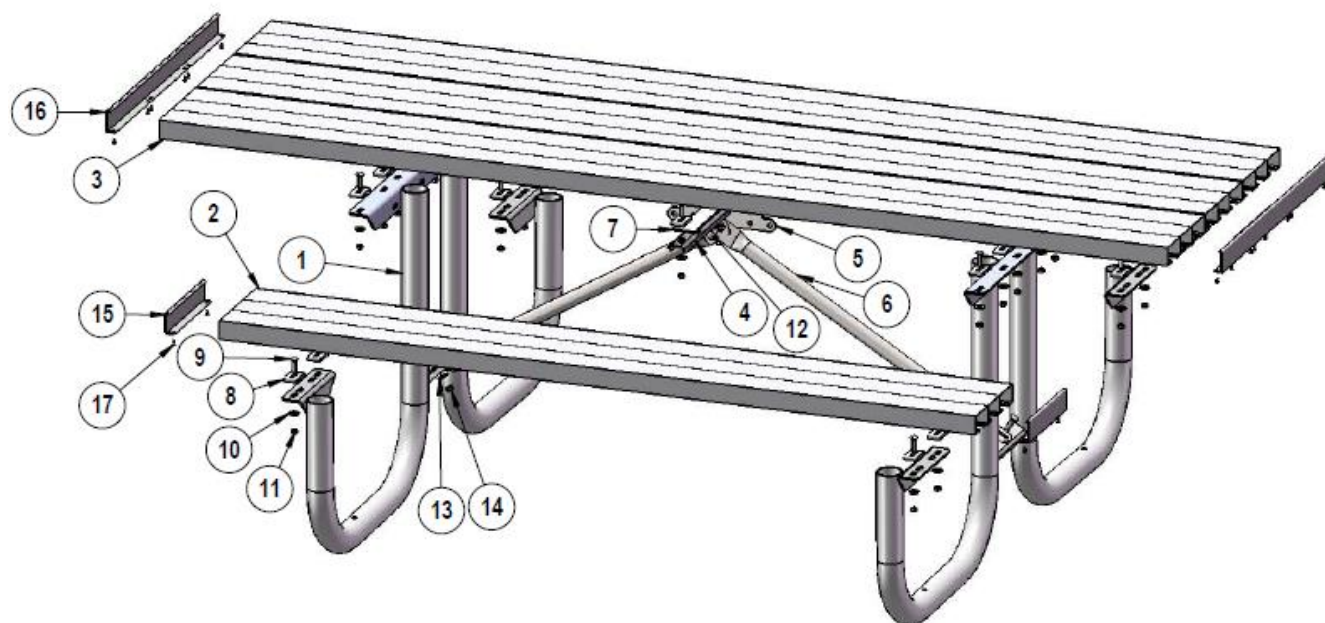
**Hardware:** All zinc hardware fasteners, with aluminum clips.

**Dimensions:** 8' accessible portable picnic table walk-through design. Top is 28-1/4" wide x 96" long and is 30-1/4" high. Seats are 9-1/4" wide x 72" long and 18-1/4" high. Outside to outside dimension is 61-3/8" x 96".



**Components**

ITEM NO.	PartNo	DESCRIPTION	Qty.
1	W238-1	238-1 wood frame	2
2	22-01-0067, 22-01-0068, or 22-01-0069	2x10x6' Alum. Planking(Clear Anodized, Green, or Tan)	2
3	22-01-0070, 22-01-0071, or 22-01-0072	2x10x8' Alum. Planking(Clear Anodized, Green, or Tan)	3
4	01-04-0507	center c channel 3 slot (new)	1
5	01-04-0508	wood table center bracket	1
6	01-04-0509	33-3/16" wood brace	2
7	01-04-0511	center cross spacer plate	1
8	22-01-0062	Alum. Planking Clip	24
9	33-06-0001	5/16" x 1-1/4" Carriage Bolt (Zinc)	24
10	33-02-0001	5/16" Zinc Plated Washer	24
11	33-01-0001	5/16" Hex Nut (Zinc)	24
12	33-06-0032	3/8" x 1-1/4" Carriage Bolt (Zinc)	3
13	33-02-0002	3/8" Zinc Plated Washer	3
14	33-01-0002	3/8" Hex Nut (Zinc)	3
15	22-01-0065	Seat End Cap	4
16	22-01-0066	Top End Cap	2
17	33-05-0008	#8 1/2" SS Phillips Panhead Tek	20

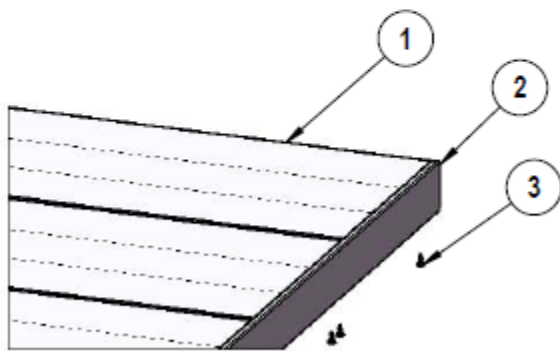


Optional Surface Mount Hardware:  
5/16" x 5" Concrete Expansion Anchor Bolts  
(Not Included)

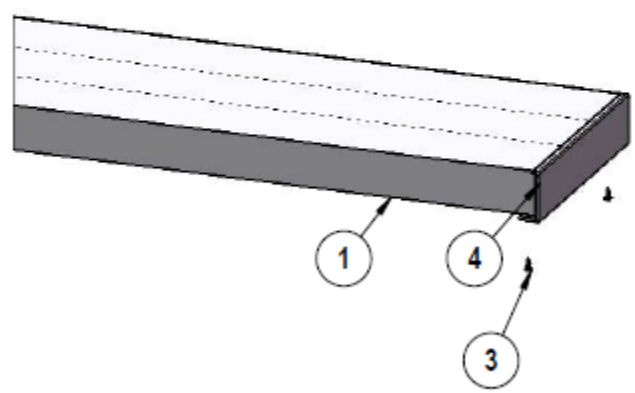
**Aluminum Plank Cap Install**

Attach Aluminum End Caps on ends of Aluminum Planks with the specified hardware.  
NOTE: The holes in End Cap will go on the bottom side of the planks.

TABLE TOP PLANKS(3)

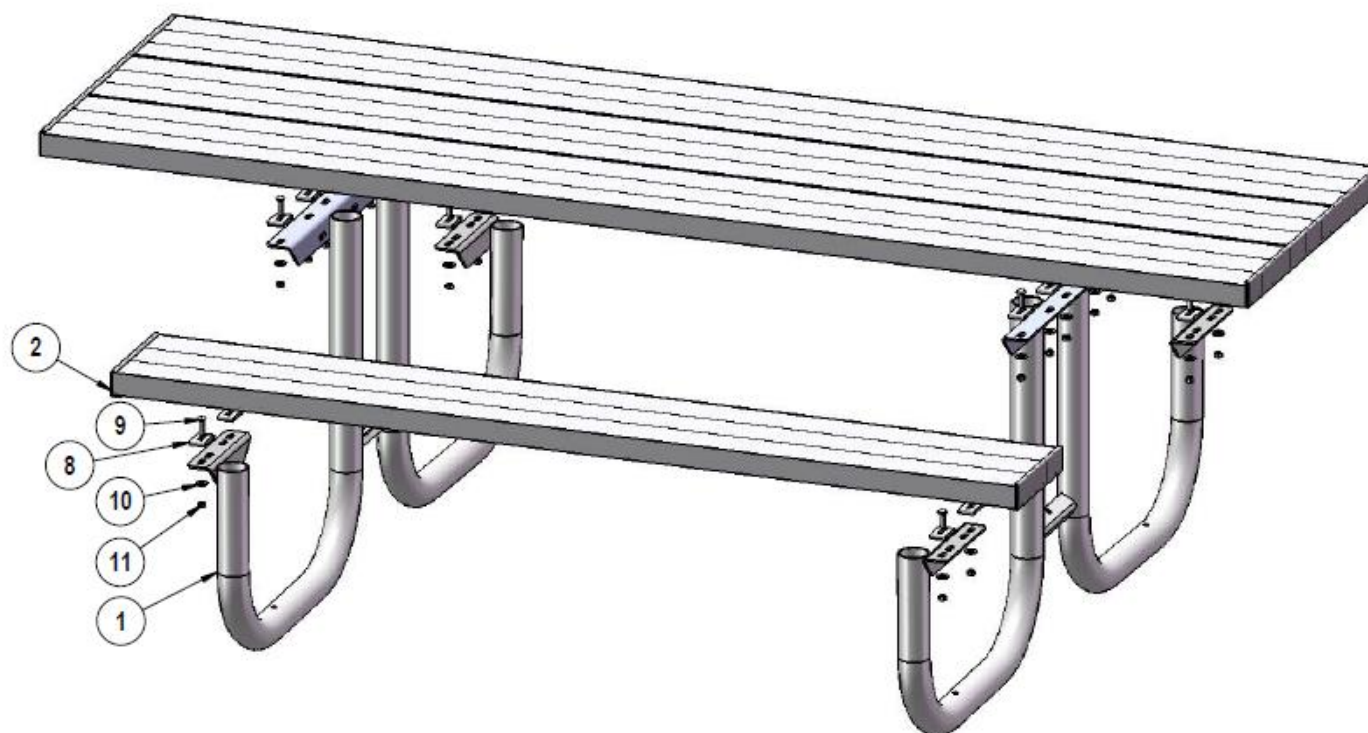


SEAT PLANK



ITEM NO.	PartNo	DESCRIPTION	Qty.	Qty.
1	22-01-00XX	Aluminum 2x10 Plank (clear anodized, green or tan)	3	1
2	22-01-0066	Top End Cap	2	-
3	33-05-0008	#8 1/2" SS Phillips Panhead Tek	12	4
4	22-01-0065	Seat End Cap	-	2

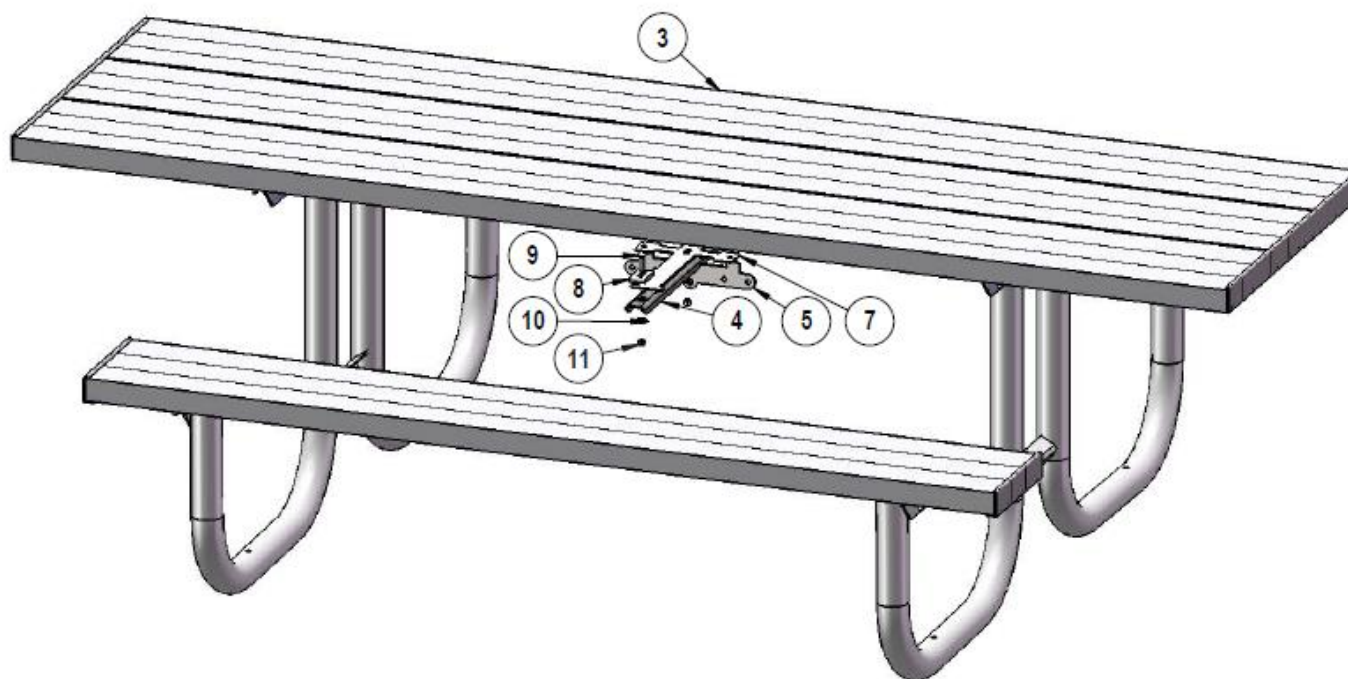
**Assembly Instructions - Step 1**



Attach the Aluminum Planks to the 238 Frames as shown using specified hardware.  
Aluminum Clips hang on the inside of the Aluminum Planks.

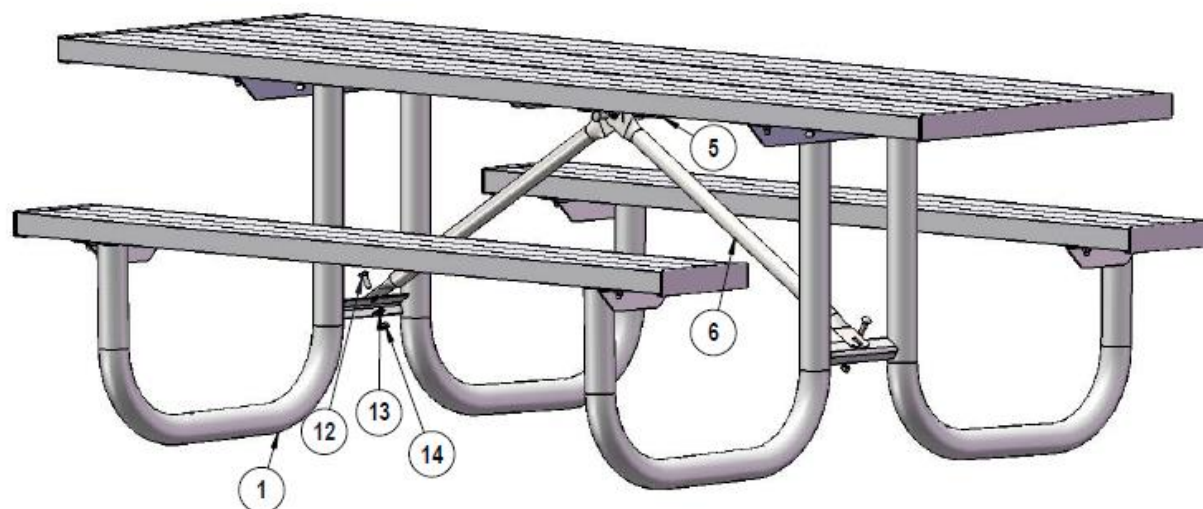


**Assembly Instructions - Step 2**



Attach the Wood Table Center Bracket and C-Channel and the Aluminum Planks as shown using specified hardware. Aluminum Clips hang on the inside of the Aluminum Planks.

**Assembly Instructions - Step 3**



Attach the 33-3/16" Braces to the Wood Center bracket and the 238 Frames as shown using specified hardware.

**Overall Dimensions**

