

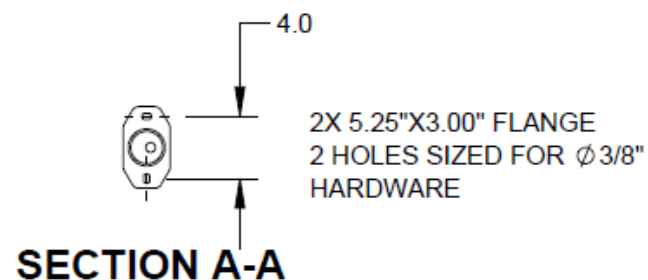
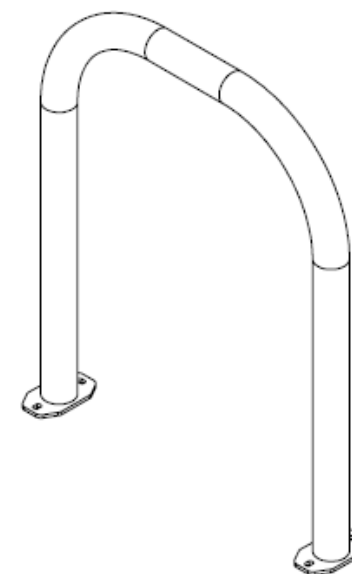
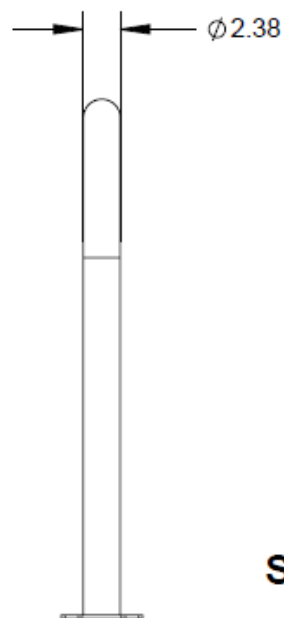
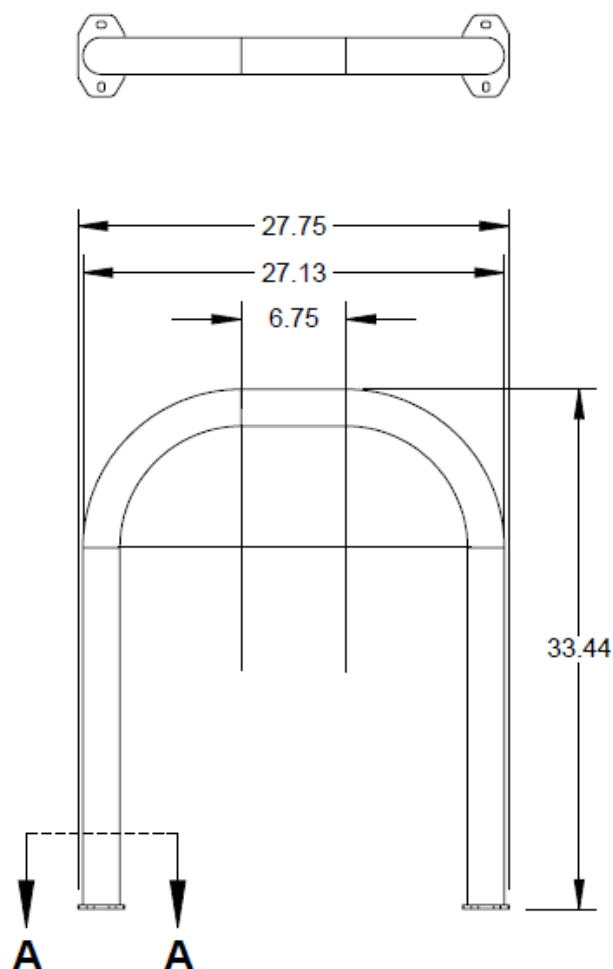
**2-Bike Inverted-U Heavy -Duty Bike Rack**  
Model: 116-1009



**Product Specifications**

- 1.66" OD Schedule 10 pipe – most affordable solution
- 2 3/8" OD Schedule 40 pipe – larger diameter pipe leaves less space between the lock and rack, which provides better security
- Accommodates two bikes
- Offers 2 points of contact for bike security
- Meets APBP bike parking guidelines

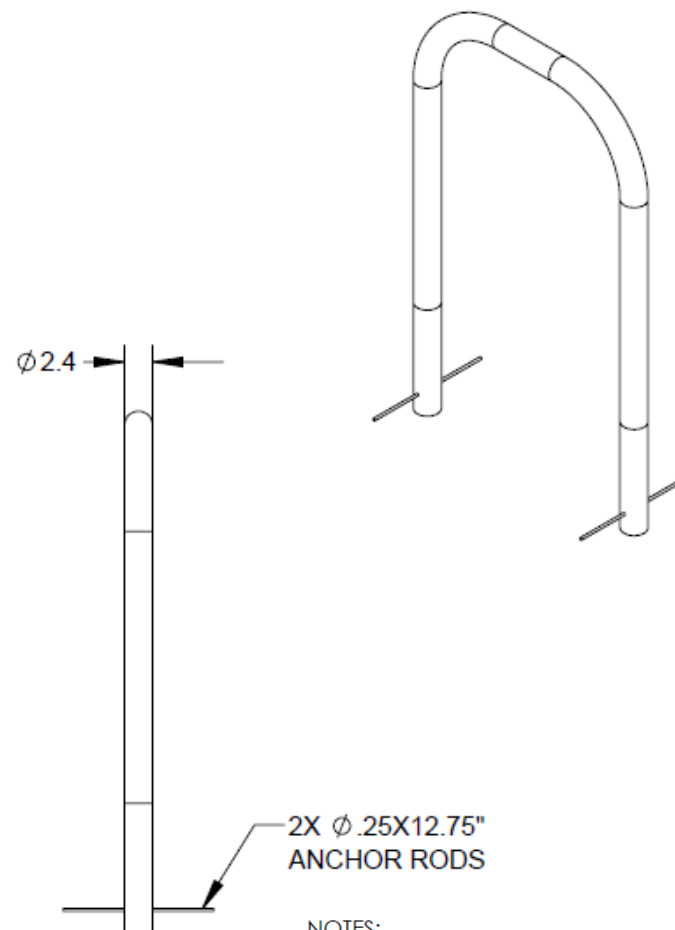
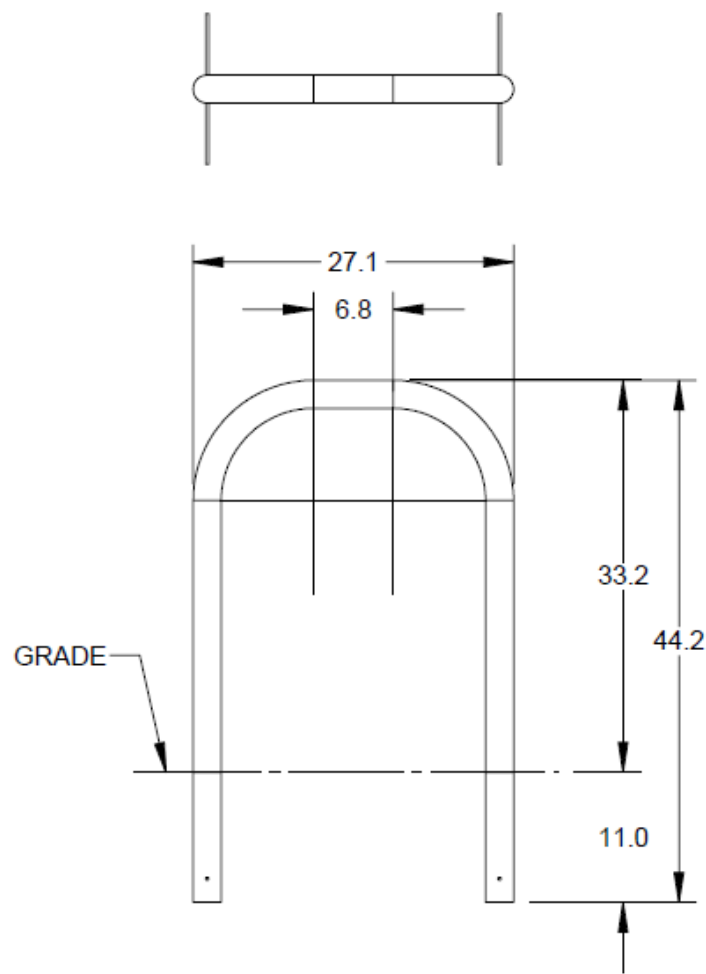
**2-Bike Inverted-U Heavy -Duty Bike Rack**  
**Model: 116-1009 (Surface Mount)**



**NOTES:**

1. DO NOT SCALE DRAWING.
2. INSTALLATION TO BE COMPLETED IN ACCORDANCE WITH MANUFACTURER'S SPECIFICATIONS.
3. TOTAL WEIGHT: 26.4 LBS

**2-Bike Inverted-U Heavy -Duty Bike Rack**  
Model: 116-1009 (In-Ground Mount)



NOTES:

1. DO NOT SCALE DRAWING.
2. INSTALLATION TO BE COMPLETED IN ACCORDANCE WITH MANUFACTURER'S SPECIFICATIONS.
3. TOTAL WEIGHT: 31.54 LBS