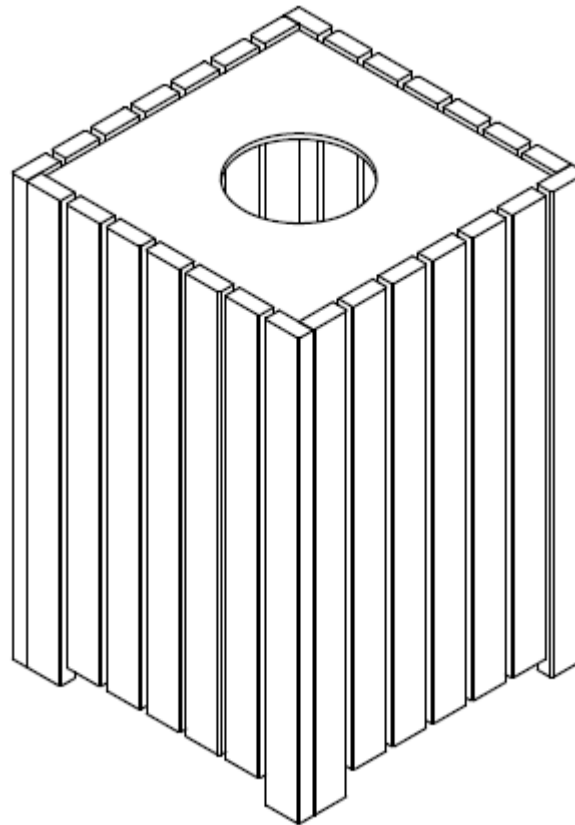
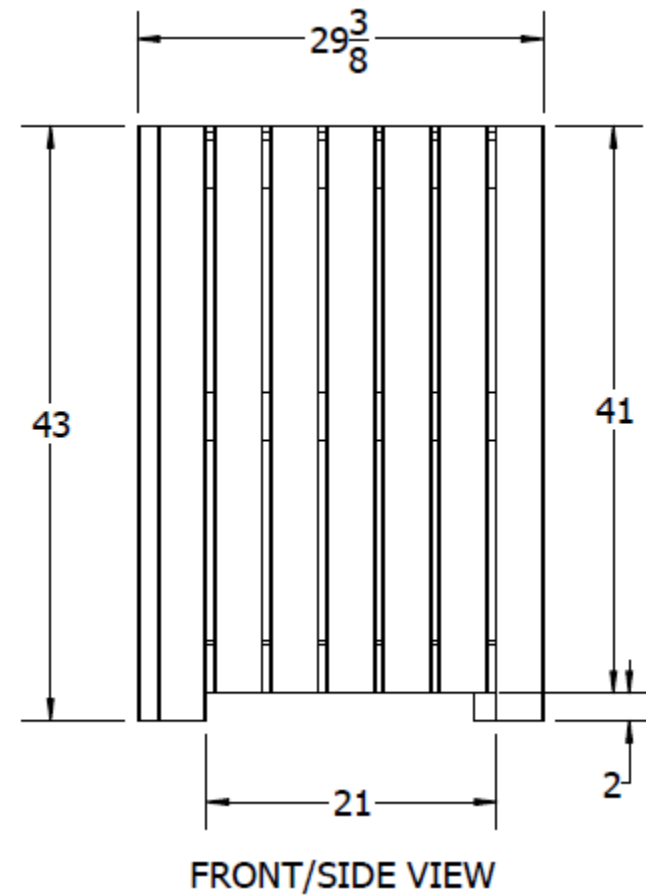
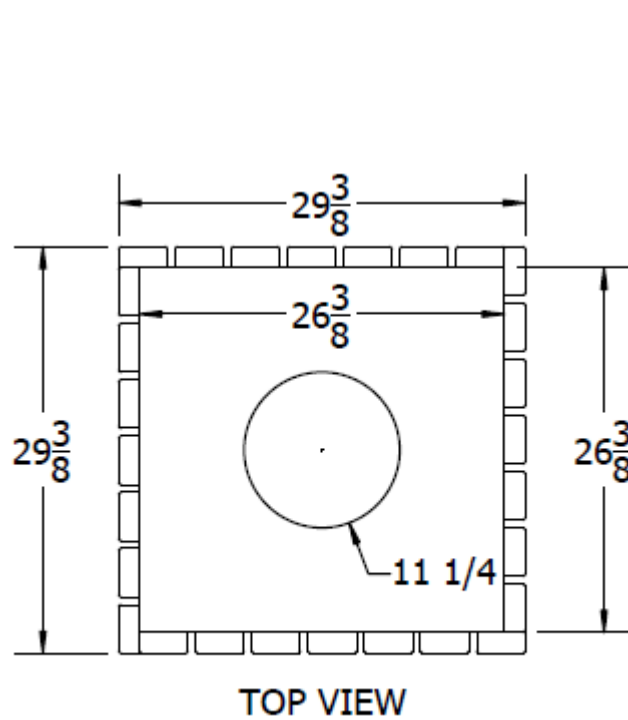


**Heavy Duty Square Recycled Plastic Receptacle - 55 Gallon  
289-4001**

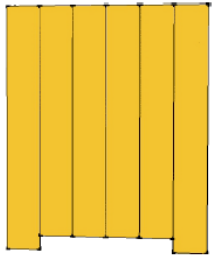


**Dimensions**

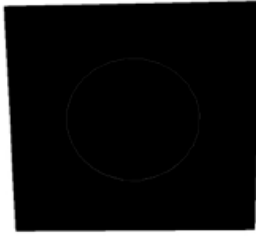


## Components

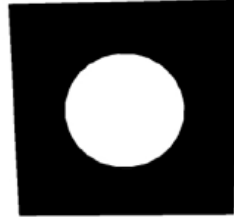
TOOLS REQUIRED: ELECTRIC DRILL WITH PHILLIPS BIT



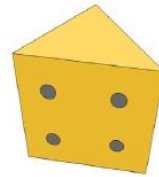
(4) RECEPTACLE WALLS



(1) BOTTOM LID



(1) TOP LID



(12) TRIANGLE CORNER BLOCK



(48) 1 5/8" SCREW

## Assembly Instructions

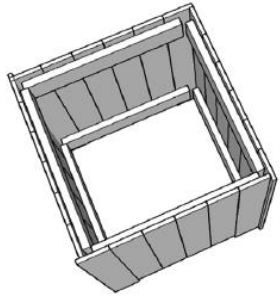


ILLUSTRATION 'A'

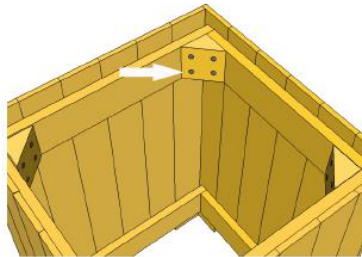


ILLUSTRATION 'B'

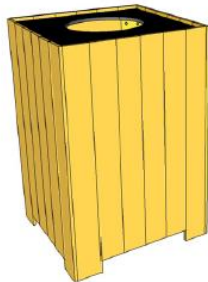


ILLUSTRATION 'C'

1. Check parts list to verify all materials are included.
2. Stand receptacle walls up and align in a "chase" pattern, so that the corners are square. (Illustration 'A')
3. Use screws to attach corner block to the top support boards of each corner. (Illustration 'B') Repeat on the support board middle and bottom corners.
4. Drop in the plastic bottom, followed by the lid on top. (Illustration 'C')