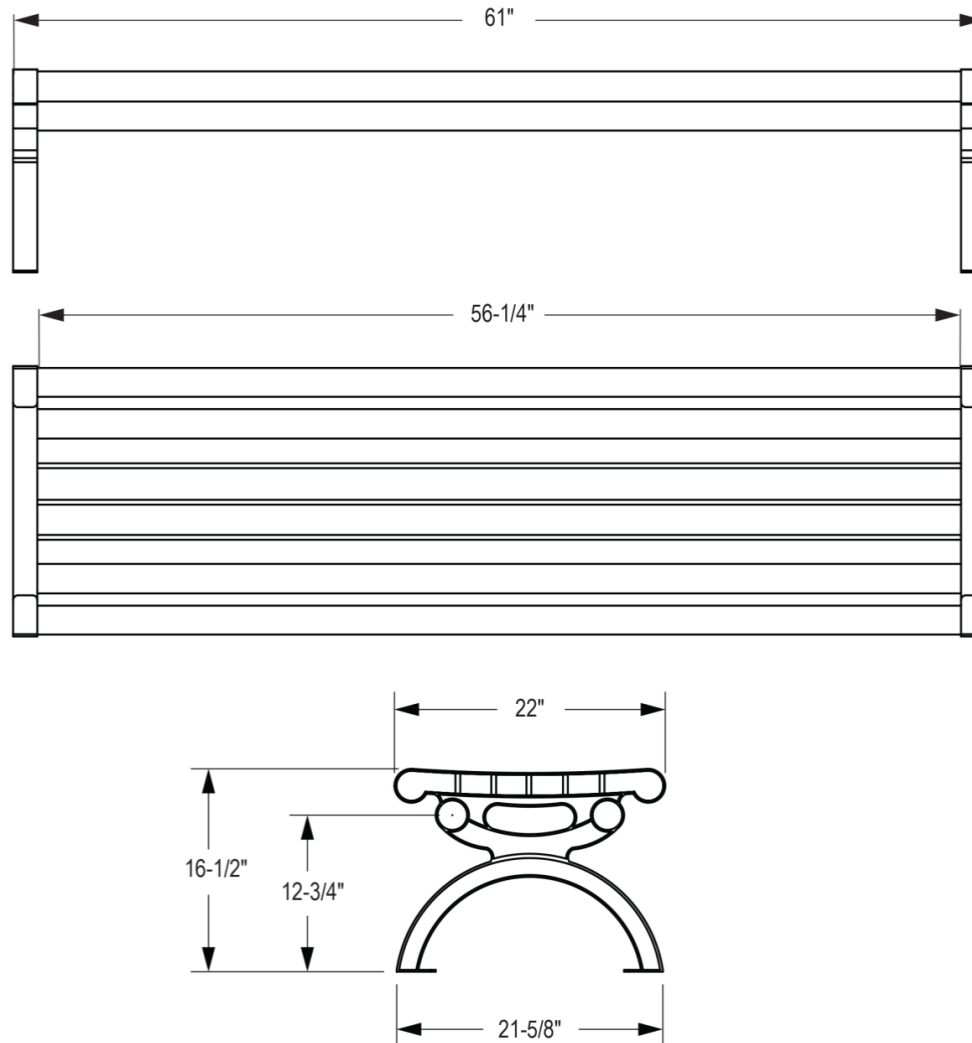


**6' Essential Series Aluminum Bench without Back - Texture Powder Coated - Gray Textured Frame  
593-9105**

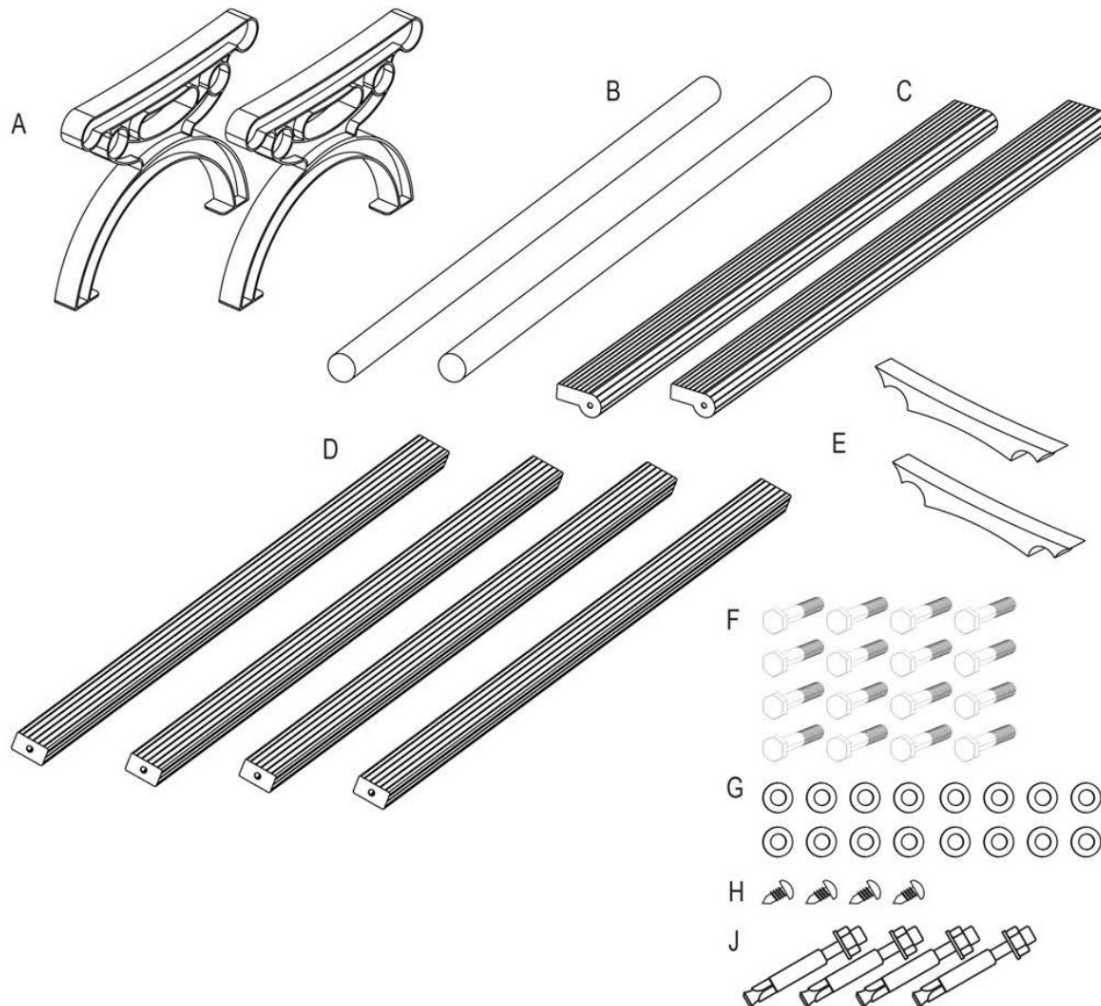


## **Safety Warnings & Equipment Inspection**

- Owners and installers please note these safety warnings and make use of this checklist on a regular basis.
- Follow installation instructions when erecting equipment.
- Ground surfaces around equipment should be restored as needed. Concrete footings should never be exposed. Surface depth should comply with ASTM and CPSC specifications.
- Check for and repair damage caused by wear or vandalism, a major factor in injury causing situations.
- All protruding bolts should be covered or cut off and finished smooth. Sharp edges on pipes should be capped or removed. Check for bent, broken, or severely worn pipe, and replace.
- All equipment should be free of rust and repainted whenever necessary to deter rusting.
- We provide our customers with layout sheets and installation instructions. Please keep on file the specifications sheet that contains the listing of every part used.
- Never add components not intended for use with this product.
- Regular maintenance is necessary in this and all park and recreational equipment to insure the safety of the user.
- Note: Proper maintenance of equipment requires regular tightening of all bolts, nuts, and setscrews.
- Note: Regular checking of all parts, castings, etc. should be made. If a part is broken or worn, it should be replaced immediately.
- Check to be sure all fittings are tight and that bars and pipes do not move.
- Replace all worn S-hooks. S-hooks must be completely closed. Failure to close S-hooks can result in serious injury to the user. NEVER reuse S-hooks.
- Test for free movement of swing hanger and other moving attached parts.
- Check for worn chains and replace them.
- A soft resilient surface should be placed under all swings extending at least twice the height of the top rail both front and back.

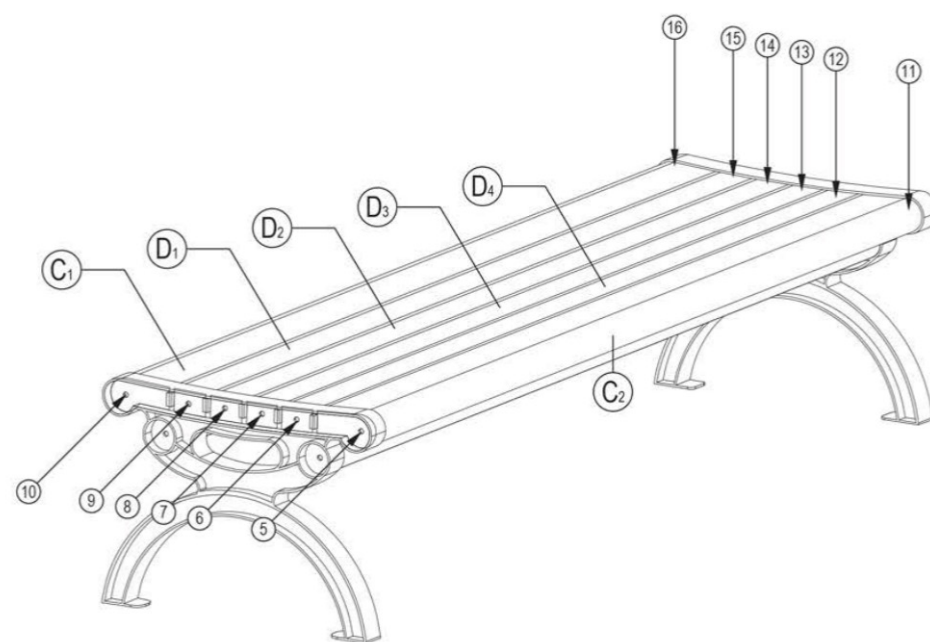
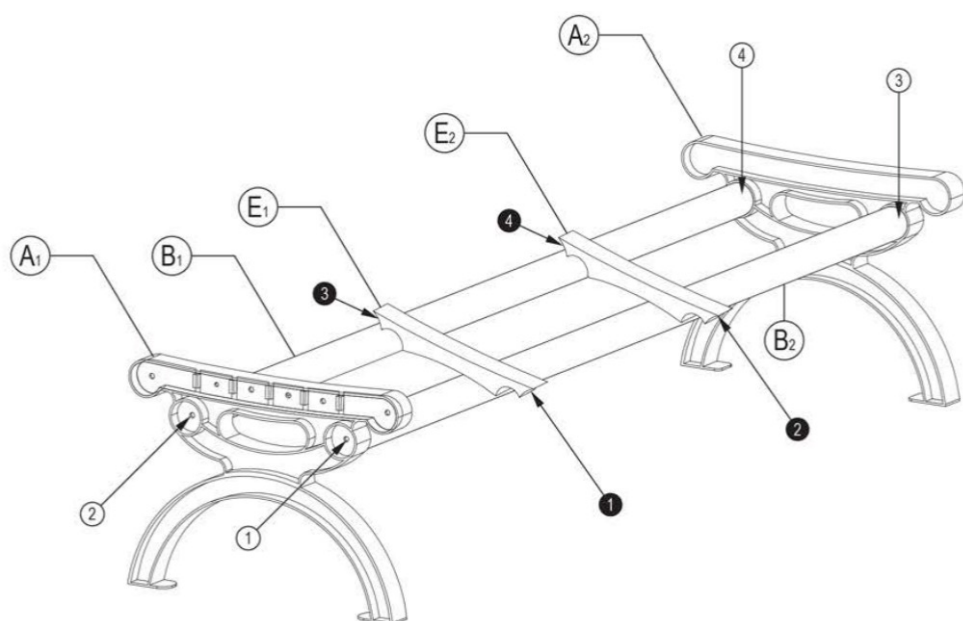
**Components**

BEFORE ASSEMBLY, PLEASE MAKE SURE ALL COMPONENTS ARE INCLUDED



- A ☐ (2) LEGS
- B ☐ (2) SUPPORT POLES
- C ☐ (2) BULL NOSE SLATS
- D ☐ (4) SEAT SLATS
- E ☐ (2) CENTER SUPPORT
- F ☐ (16) M10X45 BOLTS
- G ☐ (16) M10 WASHERS
- H ☐ (4) SELF TAPPING SCREWS
- J ☐ (4) EXPAND ANCHOR BOLTS

**Expanded View**



## **Bench Assembly**

*Make sure to assemble the bench on a soft mat to prevent scratching of the product's surface.*

*Assemble on a flat surface to ensure that the bench is level when completed.*

*DURING ASSEMBLY, DO NOT TIGHTEN BOLTS COMPLETELY.*

### **Step 1**

Starting with the Legs (A) and Support Poles (B) fasten together with M10X45 Bolts (F:1-4) and M10 Washers (G:1-4). Lightly tighten the Bolts on one end, on the opposite end ('loose') fasten with only 2 or 3 rotations to allow give for the Slats to fit into place.

### **Step 2**

Place Center Supports (E) on the Support Poles (B). Center Supports are best secured into place after the Slats are fastened.

### **Step 3**

Position Seat Slats (D) and Bull Nose Slats (C) as shown and fasten with M10X45 Bolts (F:5-16) and M10 Washers (G:5-16). Lightly tighten the Bolts on the same end as in Step 1, on the opposite ('loose') end fasten with only 2 or 3 rotations.

### **Step 4**

Fully tighten all Bolts, starting with the loose end followed by the lightly tightened end.

### **Step 5**

Position the bench upside down to position each Center Support (E). Position each approximately 17" in from the Legs (A), then secure into place at both the front and the back with Self-tapping Screws (G:1-4).

*\*Note: to level the bench it may be necessary to loosen bolts, then square bench, and then re-tighten utilizing a diagonal pattern.*



## **Surface Mount Installation**

### **Step 1**

Choose your desired location for the bench, then use a marker, chalk, or pencil to outline the holes of the flange onto the base material.

### **Step 2**

Move bench and drill 4 x 3/8" diameter holes at 3.0" depth. Place anchors in holes.

### **Step 3**

Remove nuts and washers and carefully set bench over the anchors through the holes of the bench feet.

### **Step 4**

Place washers and nuts on the anchors then tighten. Make sure to keep anchors fully recessed while tightening until set, do not over-tighten.

JH-04272023