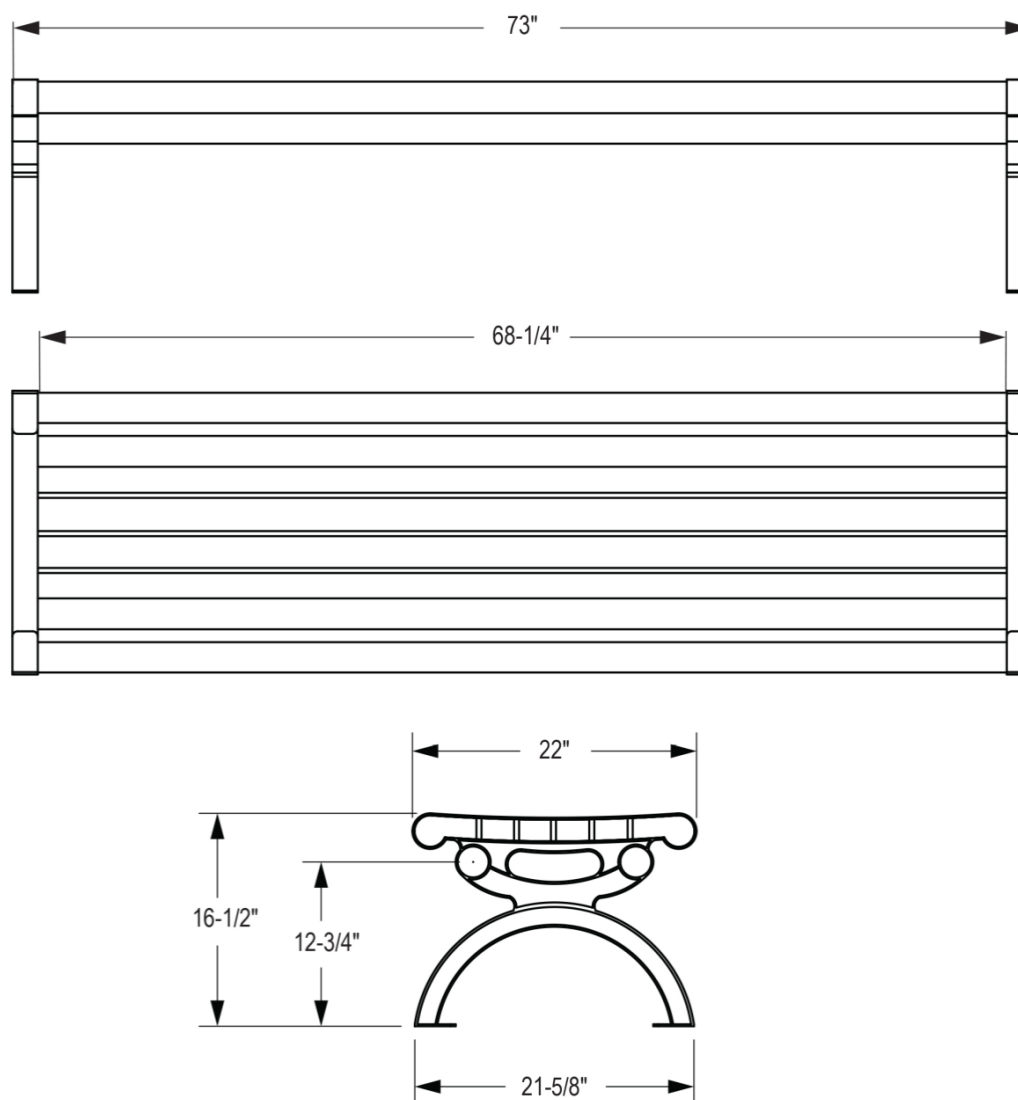


**6' Essential Series Aluminum Bench without Back - Powder Coated - Silver
593-9106**

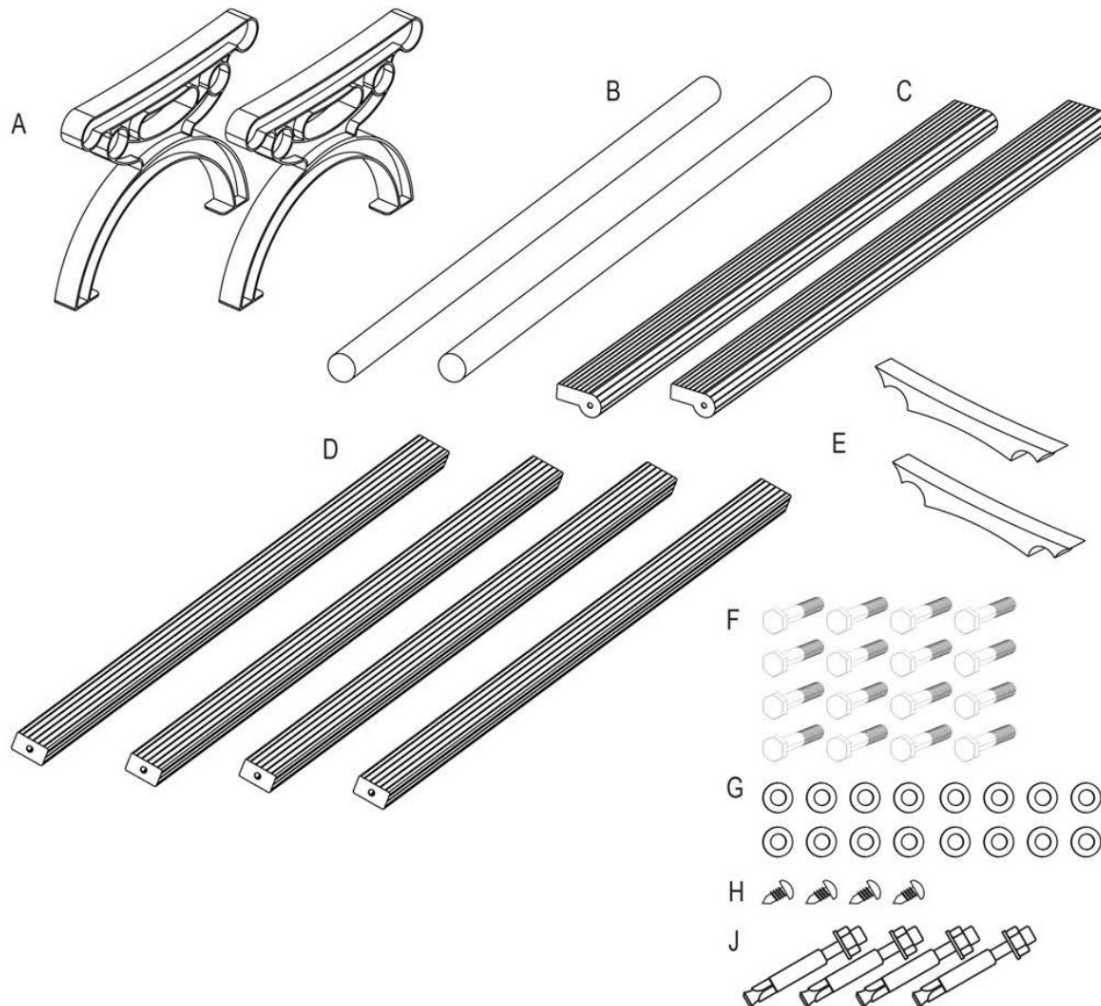


Safety Warnings & Equipment Inspection

- Owners and installers please note these safety warnings and make use of this checklist on a regular basis.
- Follow installation instructions when erecting equipment.
- Ground surfaces around equipment should be restored as needed. Concrete footings should never be exposed. Surface depth should comply with ASTM and CPSC specifications.
- Check for and repair damage caused by wear or vandalism, a major factor in injury causing situations.
- All protruding bolts should be covered or cut off and finished smooth. Sharp edges on pipes should be capped or removed. Check for bent, broken, or severely worn pipe, and replace.
- All equipment should be free of rust and repainted whenever necessary to deter rusting.
- We provide our customers with layout sheets and installation instructions. Please keep on file the specifications sheet that contains the listing of every part used.
- Never add components not intended for use with this product.
- Regular maintenance is necessary in this and all park and recreational equipment to insure the safety of the user.
- Note: Proper maintenance of equipment requires regular tightening of all bolts, nuts, and setscrews.
- Note: Regular checking of all parts, castings, etc. should be made. If a part is broken or worn, it should be replaced immediately.
- Check to be sure all fittings are tight and that bars and pipes do not move.
- Replace all worn S-hooks. S-hooks must be completely closed. Failure to close S-hooks can result in serious injury to the user. NEVER reuse S-hooks.
- Test for free movement of swing hanger and other moving attached parts.
- Check for worn chains and replace them.
- A soft resilient surface should be placed under all swings extending at least twice the height of the top rail both front and back.

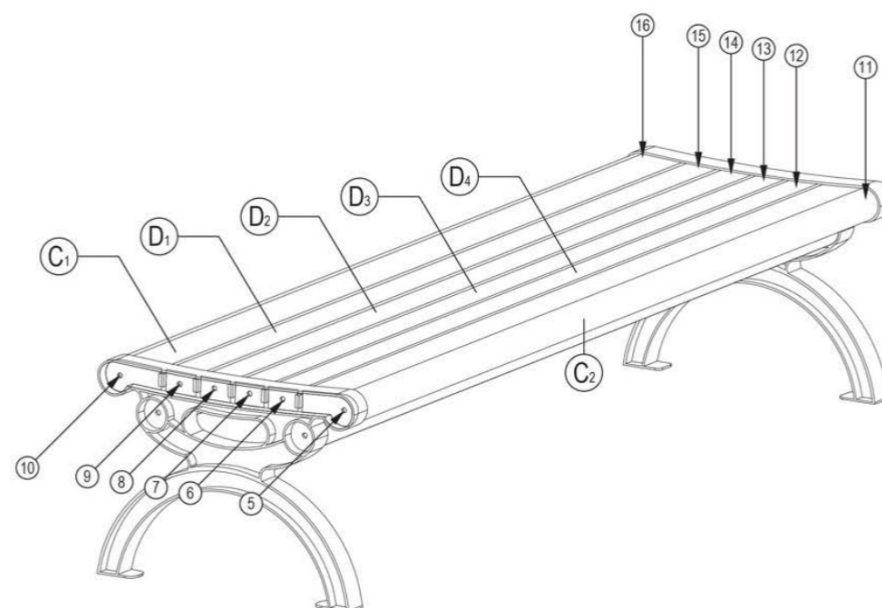
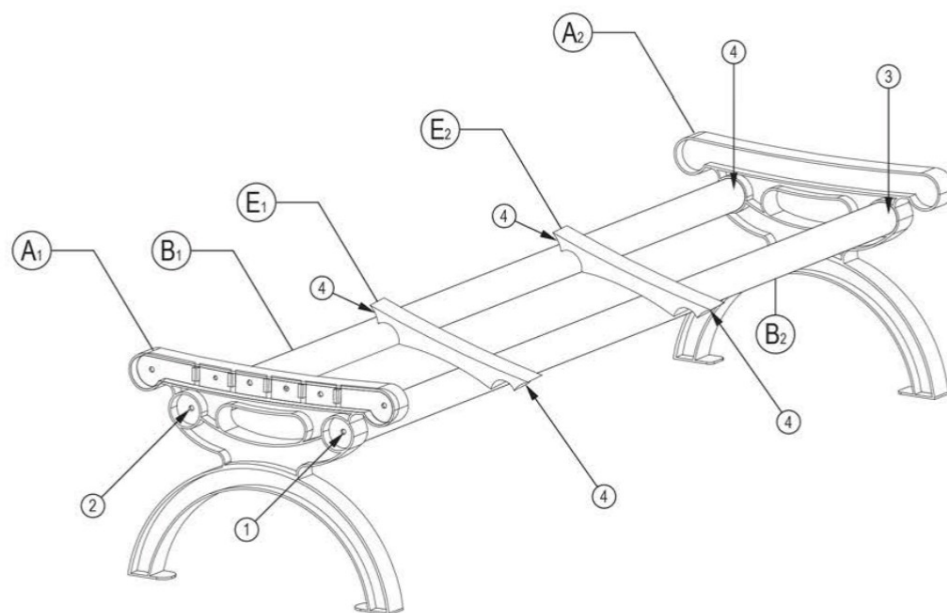
Components

BEFORE ASSEMBLY, PLEASE MAKE SURE ALL COMPONENTS ARE INCLUDED



- A ☐ (2) END (LEGS)
- B ☐ (2) SUPPORT POLES
- C ☐ (2) BULL NOSE ALUMINUM SLATS
- D ☐ (4) SEAT SLATS
- E ☐ (2) CENTER SUPPORT
- F ☐ (16) M10X45 BOLTS
- G ☐ (16) M10 WASHERS
- H ☐ (4) SELF TAPPING SCREWS
- J ☐ (4) EXPAND ANCHOR BOLTS

Expanded View



Bench Assembly

Make sure to assemble the bench on a soft mat to prevent scratching of the product's surface.

Assemble on a flat surface to ensure that the bench is level when completed.

DURING ASSEMBLY, DO NOT TIGHTEN BOLTS COMPLETELY.

Step 1

Assembly must be done on a flat surface to ensure a level bench when completed.

Step 2

Assemble Support Poles to Ends (A&B) with 4 Bolts (F) and Washers (G). Snug (lightly tighten) bolts on one end, and inserts bolts on opposite end only 2 or 3 rotations.

Step 3

Place Center Support (E) on the Support Poles (B). Will be secured in place later.

Step 4

Assemble Bull Nose Slats (C) to the front and back of legs (A), and the Slats (D) in the 4 center positions. Again snug bolts on same end as step 1, and inserts 4 Bolts (F) and Washers (G) only 2 or three rotations.

Step 5

When all parts are in place fully tighten the loose end followed by the snugged end.

Step 6

Flip the bench upside down and place each Center Support (E) approximately 17" from Ends (A) and secure in place front and back with the self-tapping screws (G).

*Note if bench isn't square to ground loosen 4 bolts securing (A&B), level bench and re-tighten bolts in diagonal pattern.

Surface Mount Installation

Step 1

For surface mount mounting place bench in desired location and mark surface for all 4 holes locations.

Step 2

Move bench and drill 4 holes 3/8" diameter at 3.0" depth. Place anchors in holes.

Step 3

Remove nuts and washers and carefully replace bench with the anchors thru the holes of the bench feet.

Step 4

Secure the nuts and washers on the anchors and hand tighten. Over tightening can result in pulling the studs from the ground.

JH-04272023