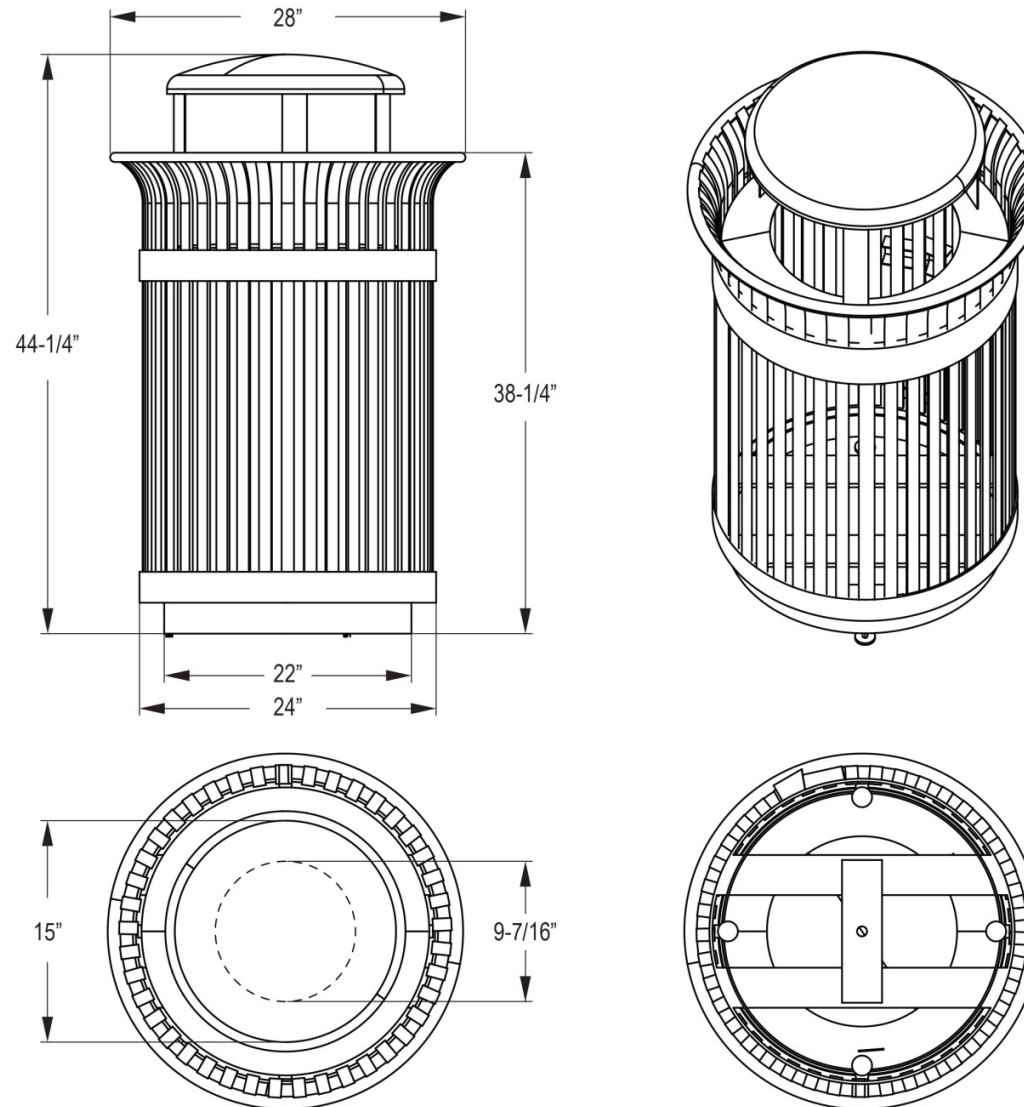


Executive Series Flare Top Trash Receptacle with Rain Bonnet Lid - Black
593-9122



Safety Warnings & Equipment Inspection

- Owners and installers please note these safety warnings and make use of this checklist on a regular basis.
- Follow installation instructions when erecting equipment.
- Ground surfaces around equipment should be restored as needed. Concrete footings should never be exposed. Surface depth should comply with ASTM and CPSC specifications.
- Check for and repair damage caused by wear or vandalism, a major factor in injury causing situations.
- All protruding bolts should be covered or cut off and finished smooth. Sharp edges on pipes should be capped or removed. Check for bent, broken, or severely worn pipe, and replace.
- All equipment should be free of rust and repainted whenever necessary to deter rusting.
- We provide our customers with layout sheets and installation instructions. Please keep on file the specifications sheet that contains the listing of every part used.
- Never add components not intended for use with this product.
- Regular maintenance is necessary in this and all park and recreational equipment to insure the safety of the user.
- Note: Proper maintenance of equipment requires regular tightening of all bolts, nuts, and setscrews.
- Note: Regular checking of all parts, castings, etc. should be made. If a part is broken or worn, it should be replaced immediately.
- Check to be sure all fittings are tight and that bars and pipes do not move.
- Replace all worn S-hooks. S-hooks must be completely closed. Failure to close S-hooks can result in serious injury to the user. NEVER reuse S-hooks.
- Test for free movement of swing hanger and other moving attached parts.
- Check for worn chains and replace them.
- A soft resilient surface should be placed under all swings extending at least twice the height of the top rail both front and back.

Common Tools Needed

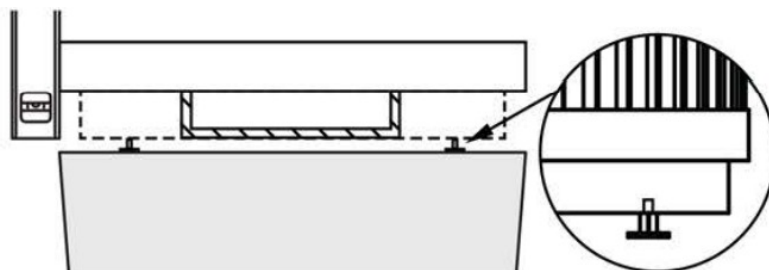
Tape Measure

Marker, Pencil, or Chalk

Masonry Drill Bit 3/16", 3/8", & 1/2"

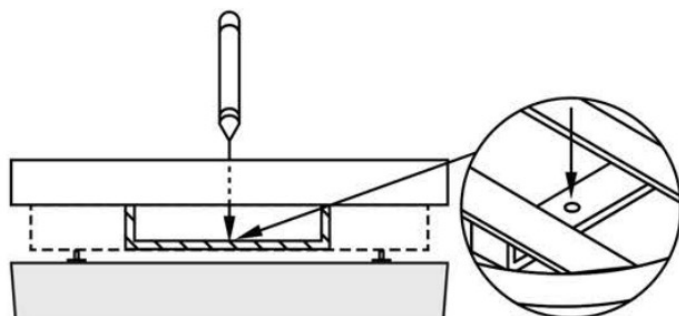
Hammer Drill or Hammer

Installation Instructions for Surface Mount



TOP TOP

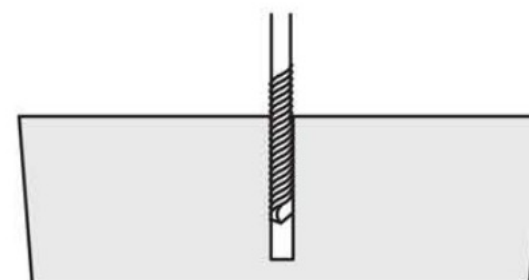
Utilize leveling legs on the bottom to level the receptacle for better stability.



Step 1

Choose your desired location for the receptacle.

Then use chalk, marker, or pencil to mark center for the drill hole on the base material.

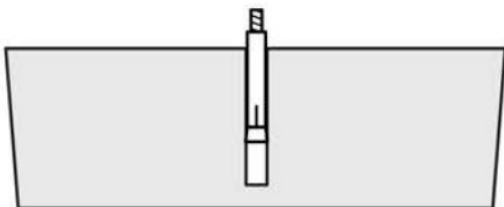


Step 2

Create starter pilot holes, it will help prevent the drill from drifting.

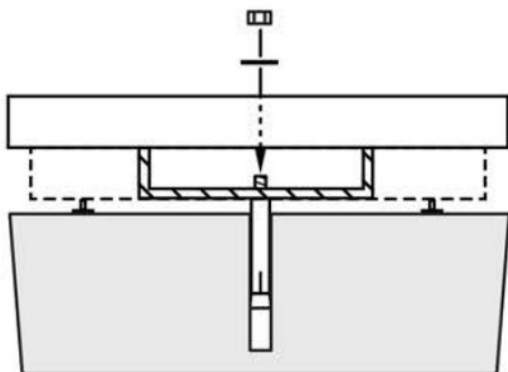
Then drill hole that is to the depth of 1-7/8" and 1/2" in diameter.

Installation Instructions for Surface Mount



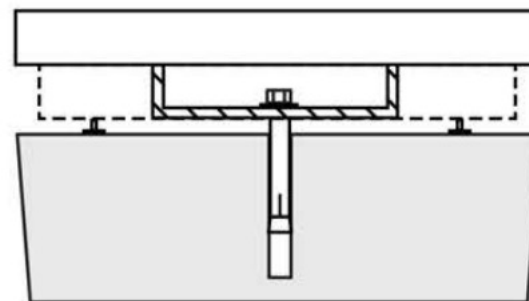
Step 3

Insert the expand anchor bolt in to drill hole to proper depth. Remove washer and nut.



Step 4

Position the receptacle and secure with washer and the expand anchor nut.



Step 5

Completely tighten the expand anchor nut.