

**WOOD PLANKS**

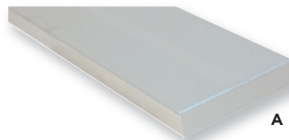
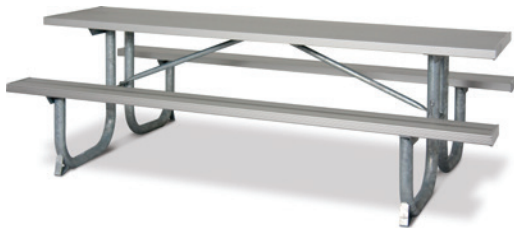
- 2" x 10" and 2" x 4" sizes
- Rounded edges
- #1 southern yellow pine

**(U) UNTREATED**

- (PT) PRESSURE TREATED**
- Environmentally friendly (ACQ)
  - Kiln dried before and after treatment

**(T) REDWOOD STAIN**

- Sealed in redwood stain with wood preservative

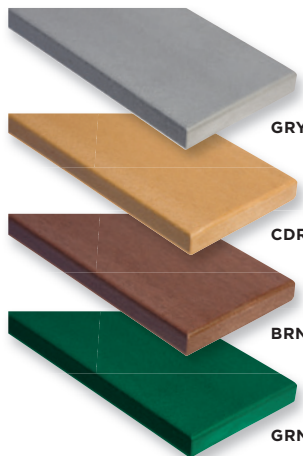


**ALUMINUM PLANKS**

- 2" x 10" size
- 6063-T6 extruded aluminum alloy

**(A) ANODIZED**

- Used for table tops, seats, and backs on most products



**RECYCLED PLANKS**

- 2" x 10", 2" x 4", 3" x 4", and 4" x 4" sizes
- Rounded edges
- 100% recycled plastic with color
- Ask about custom color options

**(GRY) GRAY**

**(CDR) CEDAR**

**(BRN) BROWN**

**(GRN) GREEN**



Most 2" x 10" recycled plastic planking is reinforced with steel flat bars to prevent sagging and warping.